



www.bova-ai.com

DAIRY SIRE

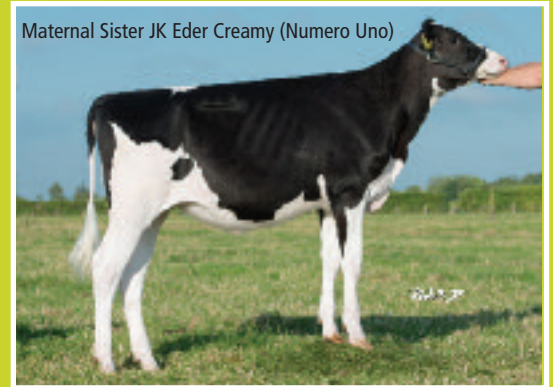
DIRECTORY
2015

DAIRY SIRE

DIRECTORY - 2015

INDEX

Holstein	
Centurion	1
Fraiko	2
MardiGras	3
Boulder, McCutch	4
Latimer, Tyson	5
Catapult, Megasire	6
Emmett, Epic	7
Deman, Pepper	8
Alphaman, Detox	9
Cashflow, Powerball	10
MainEvent, Rubicon	11
Cashmoney, Cashcoin	12
Anton, Camaro	13
Liquid Gold, Aikman	14
Springson, Mascalese	15
Colt 45, Prince	16
Bitansho, Brewmaster	17
Lexor, Snowfall	18
Applejax, Magua, CrimeTime	19
Mr Delicious Coin (Draco)	20
High EBI Holstein Friesian Sires	
Ballybride Brisbane	21
Fortfergus Meteor Bud	22
Ballybride Atlanta, Ballybride Houston	23
Moneen Miami, Ballybride Boston	24
Ballybride Darwin, Heathfield Sydney XSR	25
Ballybride Melbourne, Ballybride London	26
Beesimon Lamont, Velvetstown Madrid	27
Velvetstown Berlin, Velvetstown Vegas Xbred	
Moorepark Dublin, Ballinaborta Perth Xbred	28
British Friesians	
Blackisle Glenfinnan EX90	29
Gortfadda Stephens Storm, Churchclara Maurauder	30
Coolmohan Rebcheddar EX90	31
Blackisle Matrix, Lakemead Appeal	32
Lakemead Marshall EX90, Blackisle Benlomonnd EX90	33
Blackisle Cardow VG89, Dunum Capan 12 EX90	34
Dunum Image 51, Verdi	35
Huger, Jukebox	36
Juleng, Patch, Pascal	37



Maternal Sister JK Eder Creamy (Numero Uno)



Index	Euro	Rel	Milk Sub Index	PTA	Rel
EBI	277	51%	Milk (Kg)	379	63%
Milk Sub Index	69	63%	Fat (Kg)	8	63%
Fertility Sub Index	175	48%	Prot (Kg)	14	63%
Calving Sub Index	37	60%	Fat (%)	-0.11	63%
Calv Int (Days)	-7.33	49%	Protein (%)	0.04	63%

OOSTERZICHT CENTURION, VG87 TV TL TY

Sire: O-Cosmopolitan
Dam: DG Spr Creamy, VG, 2yr
Proi: 02-03 305 8,049kg 4.0% 3.6%P
MGS: Charlesdale Superstition-ET, TV TL TY
MGD: Ralma Marion Classic, EX91 2E DOM
 02-01 2x 389 15,917kg 711 4.5% 576 3.6%P
MGGs: Veazland Marion, EX94 SP'09 GM'09. TV TL TY
MGGD: Ralma Christmas Cookie, VG89 GMD DOM
 02-06 2x 365 13,023kg 588 4.5 % 439 3.4%P

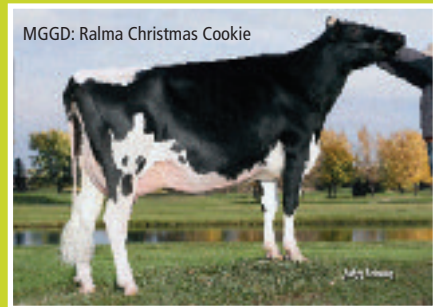
aAa: 432156

ICBF TYPE PROOF 12/2014

	-2	-1	1	2	
Angularity					-0.02 Non-Angular
Stature					+1.26 Tall
Body Depth					-0.69 Shallow
Chest Width					+0.30 Wide
Frame					+0.00
Foot Angle					+0.38 Steep
Rear Legs-Set					+0.92 Sickled
Locomotion					+1.38 Excellent
Bad Condition Score					+0.68 High
Rump Angle					+1.58 Low
Rump Width					+1.44 Wide
Fore Udder					+3.24 Strong
Rear Udder Height					+2.19 High
Udder Depth					+3.47 Shallow
Udder Support					+2.58 Strong
Rear Teat Placement					+0.80 Close
Teat Length					-0.65 Short
Teat Placement					+1.92 Close
Teat Placement Side					+0.00
Overall Body					+0.97
Overall Dairy					+0.52
Overall Feet & Legs					+2.39
Overall Type					+2.47
Overall Udder					+2.53



Dam: DG Super Creamy



MGGD: Ralma Christmas Cookie

- Outcross Sire
- International appeal
- High protein & fertility
- Early calves continue to impress
- Juror Faith Cow family



ICBF

Index	Euro	Rel	Milk Sub Index	PTA	Rel
EBI	214	60%	Milk (Kg)	487	69%
Milk Sub Index	80	69%	Fat (Kg)	15	69%
Fertility Sub Index	110	56%	Prot (Kg)	16	69%
Calving Sub Index	27	88%	Fat (%)	-0.06	69%
Calv Int (Days)	-4.50	58%	Protein (%)	0.01	69%

KHW FRAIKO-ET RC, EX91 TV TL TY

Sire: Badger-Bluff Fannie Freddie, TV TL TY
Dam: KHW Goldwyn Aiko-ET EX 91 92MS DOM RC
 02-06 2x 365 11,186kg 711 6.4% 446 4.0%P
MGS: Braedale Goldwyn, TV TL TY GP EXTRA '05
MGD: Kamps-Hollow Altitude, EX95 2E GMD DOM
 02-00 2x 305 11,118kg 418 3.8% 410 3.7%P
MGGS: Regancrest Elton Durham-ET , EX90 GM BL TV
MGGD: Clover-Mist Alisha RC, EX93 3E DOM
 12-03 2x 305 11,068kg 541 4.9% 389 3.5%P

ICBF TYPE PROOF 12/2014

	-2	-1	1	2	
Angularity				+0.02	Angular
Stature				+1.85	Tall
Body Depth				-1.14	Shallow
Chest Width				+0.40	Wide
Frame				+0.00	
Foot Angle				+1.16	Steep
Rear Legs-Set				-0.50	Sickled
Locomotion				+2.23	Excellent
Bad Condition Score				+0.91	High
Rump Angle				+2.73	Low
Rump Width				+2.61	Wide
Fore Udder				+3.38	Strong
Rear Udder Height				+2.50	High
Udder Depth				+4.18	Shallow
Udder Support				+2.06	Strong
Rear Teat Placement				+1.14	Close
Teat Length				-0.88	Short
Teat Placement				+1.13	Close
Teat Placement Side				+0.00	
Overall Body				+0.58	
Overall Dairy				+0.70	
Overall Feet & Legs				+3.23	
Overall Type				+3.11	
Overall Udder				+2.57	



- A2A2
- High indexing RC Freddie son
- Dam with 4.0% P and over 3.5% for several generations
- World famous cow family
- International sire of sons

aAa: 432516



Dam: Brookview-E Moviestar, VG86 2y



ICBF

Index	Euro	Rel	Milk Sub Index	PTA	Rel
EBI	220	51%	Milk (Kg)	369	65%
Milk Sub Index	71	65%	Fat (Kg)	15	65%
Fertility Sub Index	111	51%	Prot (Kg)	13	65%
Calving Sub Index	42	52%	Fat (%)	0.02	65%
Calv Int (Days)	-4.28	53%	Protein (%)	0.03	65%

MR MOVIESTAR MARDI GRAS, TV TL TY

Sire: Mountfield SSI DCY Mogul, TV TL TY
Dam: Brookview-E Moviestar, VG86 2yr
 02-07 2x 305 11,871kg 551 4.6% 401 3.4%P
MGS: Ensenda Taboo Planet-ET EX90 GM'11 EX'12, TV TL TY
MGD: Carters-Corner Shot Melody, EX90 DOM
 02-03 2x 305 12,732kg 595 4.7% 434 3.4%P
MGGS: Picston Shottle-ET, TV TL EX-95 GM
MGGD: Pine-Tree Missy Melinda, VG 2yr DOM
 02-02 2x 305 11,481kg 539 4.7% 390 3.4%P

ICBF TYPE PROOF 12/2014

	-2	-1	1	2	
Angularity			██████████		+1.14 Angular
Stature			██████████		+1.26 Tall
Body Depth			██████████		+0.41 Deep
Chest Width			██████████		+0.32 Wide
Frame			██████████		+0.00
Foot Angle			██████████		+1.69 Steep
Rear Legs-Set		██████████			-0.99 Sickled
Locomotion			██████████		+2.79 Excellent
Bad Condition Score			██████████		-0.39 Low
Rump Angle			██████████		+1.10 Low
Rump Width			██████████		+1.70 Wide
Fore Udder			██████████		+2.56 Strong
Rear Udder Height			██████████		+2.78 High
Udder Depth			██████████		+2.60 Shallow
Udder Support			██████████		+2.02 Strong
Rear Teat Placement			██████████		+0.38 Close
Teat Length		██████████			-0.49 Short
Teat Placement			██████████		+2.25 Close
Teat Placement Side			██████████		+0.00
Overall Body			██████████		+0.43
Overall Dairy			██████████		+0.18
Overall Feet & Legs			██████████		+3.24
Overall Type			██████████		+2.25
Overall Udder			██████████		+2.48

- International Sire of Sons
- Early calves testing well
- Rud Missy Family
- Mogul son that can also make the fancy one

aAa : 135642

Mapelwood Boulder S1370



MAPELWOOD BOULDER-ET, EX92 TV TL TY

Sire: Long-Langs Oman Oman, VG GM"10 TV TL TY
Dam: Gen-I-Beq Shottle Bombi, EX92 3*
 02-01 2x 305 12,378kg 607 4.9% 417 3.4%P
MGS: Picston Shottle-ET, TV TL EX-95 GM
MGD: Gen-I-Beq Champion Bambi, EX90 4*
 02-02 2x 305 10,409kg 438 4.2% 352 3.4%P
MGGs: Calbrett-I HH Champion- ET TV TL EX Extra
MGGD: Braedale Baler Twine, VG86 32*
 02-01 2x 305 12,096kg 591 4.9% 402 3.3%P



ICBF

Index	Euro	Rel	Milk Sub Index	PTA	Rel
EBI	159	59%	Milk (Kg)	440	69%
Milk Sub Index	77	69%	Fat (Kg)	18	69%
Fertility Sub Index	50	56%	Prot (Kg)	15	69%
Calving Sub Index	21	67%	Fat (%)	0.02	69%
Calv Int (Days)	-2.11	58%	Protein (%)	0.00	69%

ICBF TYPE PROOF 12/2013

	-2	-1	1	2	
Angularity				+1.53	Angular
Stature				+1.28	Tall
Body Depth				+0.82	Deep
Chest Width				-0.90	Narrow
Frame				0.00	
Foot Angle				+0.92	Steep
Rear Legs-Set				+0.60	Sickled
Locomotion				+1.21	Excellent
Bad Condition Score				-0.67	Low
Rump Angle				-1.27	High
Rump Width				+1.19	Wide
Fore Udder				+1.94	Strong
Rear Udder Height				+2.24	High
Udder Depth				+1.85	Shallow
Udder Support				+2.89	Strong
Rear Teat Placement				0.00	
Teat Length				+2.27	Long
Teat Placement				+0.93	Close
Teat Placement Side				0.00	
Overall Body				0.00	
Overall Dairy				0.00	
Overall Feet & Legs				+1.63	
Overall Type				+2.30	
Overall Udder				+2.16	

aAa: 315

- International sire of sons
- No.7 daughter proven sire in Canada 12/14
- Man-O-Man x Shottle Bombi

Drouner AJDH McCutch AJD



DROUNER AJDH MCCUTCH

Sire: DE-SU BKM McCutcheon, VG TV TL TY
Dam: Larcrest Catholic, VG 2yr
 02-05 2x 305 10,070kg 420 4.2% 359 3.6%P
MGS: Flevo Genetics Snowman, EX"14, TV TL TY
MGD : Larcrest Crimson, EX92 2E GMD
 05-02 2x 305 18,207kg 987 5.4% 666 3.7%P
MGGs: Ramos, TV TL
MGGD: Larcrest Cosmopolitan , VG87 11* GMD DOM
 02-04 2x 305 12,460kg 509 4.1% 450 3.6%P



ICBF

Index	Euro	Rel	Milk Sub Index	PTA	Rel
EBI	188	55%	Milk (Kg)	420	66%
Milk Sub Index	67	66%	Fat (Kg)	20	66%
Fertility Sub Index	80	52%	Prot (Kg)	13	66%
Calving Sub Index	43	54%	Fat (%)	0.07	66%
Calv Int (Days)	-3.70	54%	Protein (%)	-0.02	66%

ICBF TYPE PROOF 12/2014

	-2	-1	1	2	
Angularity				+1.35	Angular
Stature				+1.91	Tall
Body Depth				-0.94	Shallow
Chest Width				+0.26	Wide
Frame				0.00	
Foot Angle				+3.39	Steep
Rear Legs-Set				-1.35	Sickled
Locomotion				+2.65	Excellent
Bad Condition Score				-0.49	Low
Rump Angle				-1.87	High
Rump Width				+0.85	Wide
Fore Udder				+3.19	Strong
Rear Udder Height				+3.35	High
Udder Depth				+3.05	Shallow
Udder Support				+2.92	Strong
Rear Teat Placement				+0.38	Close
Teat Length				+0.06	Long
Teat Placement				+3.07	Close
Teat Placement Side				0.00	
Overall Body				+0.53	
Overall Dairy				+0.33	
Overall Feet & Legs				+3.21	
Overall Type				+3.25	
Overall Udder				+2.75	

- Early McCutcheon son
- Cosmopolitan cow family
- International Interest

Generations Latimer S1371



Dinomi AltaTyson S1459



GENERATIONS LATIMER, VG88 3YR TV TL TY

Sire: Badger-Bluff Fannie Freddie, TV TL TY
Dam: Comestar Goldwyn Lilac, VG89
 02-03 2x 305 14,556kg 671 4.6% 541 3.7%P
MGS: Braedale Goldwyn, TV TL TY GP EXTRA '05
MGD: Lylehaven Lila Z, EX94-CAN 13*
 04-05 2x 305 19,488kg 789 4.0% 674 3.5%P
MGGS: Regancrest Elton Durham-ET, EX90 GM BL TV
MGGD: Lylehaven Form Laura, EX94 3E GMD DOM 6*
 08-08 2x 305 15,440kg 590 3.8% 468 3.0%P



ICBF

Index	Euro	Rel	Milk Sub Index	PTA	Rel
EBI	205	59%	Milk (Kg)	532	70%
Milk Sub Index	78	70%	Fat (Kg)	15	70%
Fertility Sub Index	100	56%	Prot (Kg)	17	70%
Calving Sub Index	28	67%	Fat (%)	-0.09	70%
Calv Int (Days)	-3.73	58%	Protein (%)	-0.01	70%

DINOMI ALTATYSON TV TL TY

Sire: Badger-Bluff Fanny Freddie TV TL
Dam: Dinomi Shottle Tillie VG-86
 2-01 2x 298d 29,250m 3.4% 980f 3.1% 913p
MGS: Picston Shottle-ET TV TL EX-95
MGD: Dinomi Ramos Keleigh
 4-00 2x 287d 36,040m 3.2% 1164f 3.3% 1179p
MGGS: Ramos TV TL - 011H008046
MGGD: Dinomi Lynch 5987
 3-03 2x 305d 32,520m 3.5% 1122f 3.1% 1019p



ICBF

Index	Euro	Rel	Milk Sub Index	PTA	Rel
EBI	231	56%	Milk (Kg)	508	69%
Milk Sub Index	51	69%	Fat (Kg)	10	69%
Fertility Sub Index	136	55%	Prot (Kg)	13	69%
Calving Sub Index	37	57%	Fat (%)	-0.17	69%
Calv Int (Days)	-5.73	56%	Protein (%)	-0.06	69%

ICBF TYPE PROOF 12/2014

	-2	-1	1	2	
Angularity					+0.70 Angular
Stature					+1.73 Tall
Body Depth					-0.48 Shallow
Chest Width					-0.39 Narrow
Frame					+0.00
Foot Angle					+2.10 Steep
Rear Legs-Set					-1.28 Straight
Locomotion					+2.33 Excellent
Bad Condition Score					-0.11 Low
Rump Angle					+2.09 Low
Rump Width					+1.38 Wide
Fore Udder					+2.80 Strong
Rear Udder Height					+2.12 High
Udder Depth					+2.71 Shallow
Udder Support					+2.69 Strong
Rear Teat Placement					+1.24 Close
Teat Length					+0.63 Short
Teat Placement					+2.40 Close
Teat Placement Side					+0.00
Overall Body					+0.54
Overall Dairy					+1.68
Overall Feet & Legs					+3.17
Overall Type					+3.10
Overall Udder					+2.49

aAa: 432

- Early Freddie son
- International sire of sons
- Freddie x Comestar Goldwyn Lilac

ICBF TYPE PROOF 12/2014

	-2	-1	1	2	
Angularity					-0.25 Non-Angular
Stature					+0.49 Tall
Body Depth					-1.27 Shallow
Chest Width					-0.73 Wide
Frame					0.00
Foot Angle					+1.66 Steep
Rear Legs-Set					-2.98 Sickled
Locomotion					+1.34 Excellent
Bad Condition Score					+0.95 High
Rump Angle					+2.19 Low
Rump Width					-0.59 Wide
Fore Udder					+1.58 Strong
Rear Udder Height					+1.69 High
Udder Depth					+1.58 Shallow
Udder Support					+0.84 Strong
Rear Teat Placement					+0.00 Wide
Teat Length					-1.16 Short
Teat Placement					+0.95 Close
Teat Placement Side					0.00
Overall Body					0.00
Overall Dairy					0.00
Overall Feet & Legs					+1.22
Overall Type					+1.72
Overall Udder					+1.44

aAa : 243165

- High Fertility @ +€136
- Balanced proof
- Good Calving Interval
- Complete Bull

Larcrest Catapult-ET S2244



LARCREST CATAPULT, TV TL TY

Sire: Amighetti Numero Uno, TV TL TY
 Dam : Larcrest Crimson, EX92 2E GMD
 05-02 2x 305 18,207kg 987 5.4% 666 3.7%P
 MGS : Ramos, TV TL
 MGD : Larcrest Cosmopolitan , VG87 11* GMD DOM
 02-04 2x 305 12,460kg 509 4.1% 450 3.6%P
 MGGs : Picston Shottle-ET, TV TL EX-95 GM
 MGGD : Larcrest Oside Champagne-TW, EX90 GMD DOM
 07-08 2x 365 10,306kg 478 4.6% 369 3.6%P



ICBF

Index	Euro	Rel	Milk Sub Index	PTA	Rel
EBI	130	21%	Milk (Kg)	279	29%
Milk Sub Index	44	29%	Fat (Kg)	12	29%
Fertility Sub Index	63	16%	Prot (Kg)	9	29%
Calving Sub Index	17	28%	Fat (%)	0.03	29%
Calv Int (Days)	-2.88	16%	Protein (%)	-0.02	29%

ICBF TYPE PROOF 12/2014

	-2	-1	1	2	
Angularity				+1.05	Angular
Stature				+1.64	Tall
Body Depth				+0.61	Deep
Chest Width				+0.03	Wide
Frame				0.00	
Foot Angle				+1.84	Steep
Rear Legs-Set				-0.56	Straight
Locomotion				+2.22	Excellent
Bad Condition Score				-0.69	Low
Rump Angle				-0.17	High
Rump Width				+1.73	Wide
Fore Udder				+2.10	Strong
Rear Udder Height				+2.12	High
Udder Depth				+2.04	Shallow
Udder Support				+2.24	Strong
Rear Teat Placement				-0.02	Wide
Teat Length				+0.32	Short
Teat Placement				+1.33	Close
Teat Placement Side				0.00	
Overall Body				+0.27	
Overall Dairy				+0.29	
Overall Feet & Legs				+2.46	
Overall Type				+2.64	
Overall Udder				+2.14	

aAa : 423

- Numero Uno son
- Son of Ramos Cosmopolitan herself

Butz-Hill Megasire-ET S2245



BUTZ-HILL MEGASIRE, TV TL TY

Sire: Seagull-Bay Supersire, TV TL TY
 Dam: Morsan Man D Missy, VG 2yr
 02-04 2x 305 9,276kg 510 5.5% 345 3.7%P
 MGS: Long-Langs Oman Oman, VG GM"10 TV TL TY
 MGD: Valleyville Dolman Missy, VG89 1*
 03-11 2x 305 18,116kg 837 4.6% 616 3.4%P
 MGGs: Regancrest Dolman, GP ST'06 TV TL TY
 MGGD: Eastside Lewisdale Gold Missy, EX95 2E 12*
 07-01 2x 305 14,502kg 694 4.8% 474 3.3%P



ICBF

Index	Euro	Rel	Milk Sub Index	PTA	Rel
EBI	122	13%	Milk (Kg)	471	15%
Milk Sub Index	68	15%	Fat (Kg)	15	15%
Fertility Sub Index	28	12%	Prot (Kg)	14	15%
Calving Sub Index	32	19%	Fat (%)	-0.06	15%
Calv Int (Days)	-0.60	13%	Protein (%)	-0.04	15%

ICBF TYPE PROOF 12/2014

	-2	-1	1	2	
Angularity				+1.12	Angular
Stature				+1.33	Tall
Body Depth				+0.53	Deep
Chest Width				-0.51	Narrow
Frame				0.00	
Foot Angle				+1.29	Steep
Rear Legs-Set				-0.76	Straight
Locomotion				+1.31	Excellent
Bad Condition Score				-0.51	Low
Rump Angle				+0.02	Low
Rump Width				+1.45	Wide
Fore Udder				+1.40	Strong
Rear Udder Height				+2.23	High
Udder Depth				+1.31	Shallow
Udder Support				+2.14	Strong
Rear Teat Placement				+1.03	Close
Teat Length				-0.27	Short
Teat Placement				+1.48	Close
Teat Placement Side				0.00	
Overall Body				+1.03	
Overall Dairy				+0.75	
Overall Feet & Legs				+1.36	
Overall Type				+2.04	
Overall Udder				+1.94	

aAa : 243

- Supersire son
- Daughters continue to develop and appeal
- Sire of Sons
- GoldMissy \$1m family

Hood M-O-M Emmett S1668



HOOD MOM EMMETT, TV TL TY

Sire: Long-Langs Oman Oman, VG GM"10 TV TL TY
Dam: Tramilda-N Baxter Emily, VG 2yr
 02-05 2x 282 14.037kg 584 4.2% 481 3.4%P
MGS: Wabash-Way Evett, VG86 2yr 1* DOM
 02-02 2x 305 12,909kg 594 4.6% 410 3.2%P
MGGS: Picston Shottle-ET, TV TL EX-95 GM
MGGD: Crockett-Acres Elita, VG87 GMD DOM 3*
 02-02 2x 305 15,486kg 581 3.8% 542 3.5%P



ICBF

Index	Euro	Rel	Milk Sub Index	PTA	Rel
EBI	192	64%	Milk (Kg)	612	77%
Milk Sub Index	95	77%	Fat (Kg)	24	77%
Fertility Sub Index	56	61%	Prot (Kg)	19	77%
Calving Sub Index	40	70%	Fat (%)	-0.01	77%
Calv Int (Days)	-0.96	63%	Protein (%)	-0.02	77%

ICBF TYPE PROOF 12/2014

	-2	-1	1	2	
Angularity					+1.71 Angular
Stature					+2.01 Tall
Body Depth					+1.43 Deep
Chest Width					+0.01 Narrow
Frame					0.00
Foot Angle					+1.32 Steep
Rear Legs-Set					-1.09 Sickled
Locomotion					+1.96 Excellent
Bad Condition Score					-0.37 Low
Rump Angle					+0.51 Low
Rump Width					+2.53 Wide
Fore Udder					+0.75 Strong
Rear Udder Height					+2.83 High
Udder Depth					+0.42 Shallow
Udder Support					+2.45 Strong
Rear Teat Placement					+1.77 Close
Teat Length					+0.77 Long
Teat Placement					+0.64 Close
Teat Placement Side					0.00
Overall Body					+1.74
Overall Dairy					+1.10
Overall Feet & Legs					+2.23
Overall Type					+2.31
Overall Udder					+1.73

aAa: 234

- One of the highest Man-O-Man sons
- Maternal brother to Epic
- 43kg solids

Generations Epic S1182



Whittier-Farms Epic Audi, VG 2yr

GENERATIONS EPIC EX94. TV TL TY

Sire: Charlesdale Superstition-ET, TV TL TY
Dam: Tramilda-N Baxter Emily, VG 2yr
 02-05 2x 282 14.037kg 584 4.2% 481 3.4%P
MGS: Emerald-Acr-Sa T-Baxter, EX91 EX"10, TV TL TY
MGD: Wabash-Way Evett, VG86 2yr 1* DOM
 02-02 2x 305 12,909kg 594 4.6% 410 3.2%P
MGGS: Picston Shottle-ET, TV TL EX-95 GM
MGGD: Crockett-Acres Elita, VG87 GMD DOM 3*
 02-02 2x 305 15,486kg 581 3.8% 542 3.5%P



ICBF

Index	Euro	Rel	Milk Sub Index	PTA	Rel
EBI	157	62%	Milk (Kg)	519	75%
Milk Sub Index	59	75%	Fat (Kg)	13	75%
Fertility Sub Index	55	58%	Prot (Kg)	14	75%
Calving Sub Index	46	63%	Fat (%)	-0.12	75%
Calv Int (Days)	-1.33	60%	Protein (%)	-0.06	75%

ICBF TYPE PROOF 12/2013

	-2	-1	1	2	
Angularity					+0.83 Angular
Stature					+2.27 Tall
Body Depth					+1.37 Deep
Chest Width					+1.88 Wide
Frame					0.00
Foot Angle					+2.04 Steep
Rear Legs-Set					-0.85 Sickled
Locomotion					+2.20 Excellent
Bad Condition Score					+0.81 High
Rump Angle					+1.45 Low
Rump Width					+1.97 Wide
Fore Udder					+2.33 Strong
Rear Udder Height					+2.73 High
Udder Depth					+2.43 Shallow
Udder Support					+2.08 Strong
Rear Teat Placement					-1.50 Wide
Teat Length					+0.40 Long
Teat Placement					+0.98 Close
Teat Placement Side					0.00
Overall Body					-1.24
Overall Dairy					-1.77
Overall Feet & Legs					+2.48
Overall Type					+2.83
Overall Udder					+2.36

aAa: 432

- Sire of sons
- Daughter proven

EDG Deman-ET s2033



Delaberge Pepper s2049



EDG DEMAN, TV TL TY

Sire: Mountfield SSI DCY Mogul, TV TL TY
Dam: Co-Vista Atwood Desire, VG87 2yr
 02-03 2x 305 10,274kg 402 3.9% 353 3.4%P
MGS: Maple-Downs-I G W Atwood-ET EX90 ST'12, TV TL TY
MGD: Scientific Deluxe Rae, EX91
 03-11 2x 305 13,531kg 518 3.8% 457 3.4%P
MGGS: Picston Shottle-ET, TV TL EX-95 GM
MGGD: Scientific Debutante Rae, EX92 GMD DOM 3*
 02-02 2x 305 12,247kg 540 4.4% 415 3.4%P



ICBF

Index	Euro	Rel	Milk Sub Index	PTA	Rel
EBI	147	55%	Milk (Kg)	272	66%
Milk Sub Index	77	66%	Fat (Kg)	16	66%
Fertility Sub Index	54	53%	Prot (Kg)	13	66%
Calving Sub Index	22	54%	Fat (%)	0.10	66%
Calv Int (Days)	-1.38	55%	Protein (%)	0.07	66%

ICBF TYPE PROOF 12/2014

	-2	-1	1	2	
Angularity				+1.95	Angular
Stature				+2.73	Tall
Body Depth				+1.85	Deep
Chest Width				+0.32	Wide
Frame				0.00	
Foot Angle				+1.80	Steep
Rear Legs-Set				-1.19	Straight
Locomotion				+3.62	Excellent
Bad Condition Score				-0.75	Low
Rump Angle				-0.97	High
Rump Width				+3.59	Wide
Fore Udder				+3.54	Strong
Rear Udder Height				+3.48	High
Udder Depth				+3.81	Shallow
Udder Support				+2.09	Strong
Rear Teat Placement				+0.51	Close
Teat Length				+0.43	Long
Teat Placement				+1.91	Close
Teat Placement Side				0.00	
Overall Body				+0.94	
Overall Dairy				+0.82	
Overall Feet & Legs				+3.19	
Overall Type				+3.42	
Overall Udder				+3.02	

aAa : 345261

- One of the highest GTPI Type sires
- Debutante Rae/Roxy cow family

DELABERGE PEPPER, TV TL TY

Sire: Mountfield SSI DCY Mogul, TV TL TY
Dam: Delaberge Planet Lucia, VG87 2yr
 02-00 2x 365 15,021kg 619 4.1% 501 3.3%P
MGS: Ensenda Taboo Planet-ET EX90 GM'11 EX'12, TV TL TY
MGD: Delaberge Justice Lucia, VG88 7*
 02-01 2x 365 15,860kg 623 3.9% 562 3.5%P
MGGS: O-Bee Marfred Justice, TV TL
MGGD: Delaberge Durham Lucille, EX93 2E 11*



ICBF

Index	Euro	Rel	Milk Sub Index	PTA	Rel
EBI	218	52%	Milk (Kg)	240	65%
Milk Sub Index	54	65%	Fat (Kg)	13	65%
Fertility Sub Index	115	51%	Prot (Kg)	9	65%
Calving Sub Index	46	51%	Fat (%)	0.07	65%
Calv Int (Days)	-4.88	53%	Protein (%)	0.03	65%

ICBF TYPE PROOF 12/2014

	-2	-1	1	2	
Angularity				+0.83	Angular
Stature				+1.13	Tall
Body Depth				+0.85	Shallow
Chest Width				+0.60	Narrow
Frame				0.00	
Foot Angle				+1.04	Steep
Rear Legs-Set				-0.94	Sickled
Locomotion				+1.09	Excellent
Bad Condition Score				-0.04	Low
Rump Angle				+0.70	Low
Rump Width				+1.50	Wide
Fore Udder				+3.00	Strong
Rear Udder Height				+2.84	High
Udder Depth				+2.60	Shallow
Udder Support				+2.32	Strong
Rear Teat Placement				-0.36	Wide
Teat Length				-0.19	Short
Teat Placement				+3.36	Close
Teat Placement Side				0.00	
Overall Body				+0.36	
Overall Dairy				+0.07	
Overall Feet & Legs				+2.16	
Overall Type				+2.13	
Overall Udder				+2.80	

aAa : 351

- High GTPI Mogul Son
- Flush Sire
- Sire of Sons
- A2A2

DG RH Alphaman Red



Dam : BTS Avea Red, VG87 2yr
Detox Daughter

Our-Favourite Detox-ET s2246



DG RH ALPHAMAN RED TV TL TY

Sire: Gen-I-Beq Aikman RC, VG. TV TL TY
Dam: BTS Avea Red, VG 87 2yr
 02-02 2x 305 8,829kg 458 4.0% 380 3.3%P proj
MGS: Our-Favorite Detox, VG86 TV TL TY
MGD: KHW-I Aika Baxter, VG89
 02-01 2x 365 13,577kg 785 5.8% 499 3.7%P
MGGs: Emerald-Acr-Sa T-Baxter, EX91 EX"10, TV TL TY
MGGD: KHW Goldwyn Aiko RC, EX91 DOM



ICBF

Index	Euro	Rel	Milk Sub Index	PTA	Rel
EBI	201	56%	Milk (Kg)	467	71%
Milk Sub Index	79	71%	Fat (Kg)	22	71%
Fertility Sub Index	64	53%	Prot (Kg)	15	71%
Calving Sub Index	-9	50%	Fat (%)	0.07	71%
Calv Int (Days)	-1.10	55%	Protein (%)	0.01	71%

OUR-FAVORITE DETOX, VG86 TV TL TY

Sire: Picston Shottle-ET, TV TL EX-95 GM
Dam: Scientific Gold Dish Rae RC, VG88 DOM
 02-05 3x 305 13,395kg 535 4.0% 469 3.5%P
MGS: Braedale Goldwyn, TV TL TY GP EXTRA '05
MGD: Scientific Debutante Rae, EX92 GMD DOM 3*
 02-02 2x 305 12,247kg 540 4.4% 415 3.4%P
MGGs: Regancrest Elton Durham-ET , EX90 GM BL TY
MGGD: Scientific Jubilant Rae RC, EX90 DOM
 05-11 3x 305 14,910 kg 637 4.3% 533 3.6%P



ICBF

Index	Euro	Rel	Milk Sub Index	PTA	Rel
EBI	133	62%	Milk (Kg)	476	83%
Milk Sub Index	63	83%	Fat (Kg)	12	83%
Fertility Sub Index	47	61%	Prot (Kg)	14	83%
Calving Sub Index	15	48%	Fat (%)	-0.10	83%
Calv Int (Days)	-1.42	48%	Protein (%)	-0.03	83%

ICBF TYPE PROOF 12/2014

	-2	-1	1	2	
Angularity				+1.17	Angular
Stature				+0.54	Tall
Body Depth				+0.46	Deep
Chest Width				-1.12	Narrow
Frame				0.00	
Foot Angle				-0.52	Steep
Rear Legs-Set				+0.58	Sickled
Locomotion				+1.01	Excellent
Bad Condition Score				-0.97	Low
Rump Angle				+0.73	Low
Rump Width				+1.34	Wide
Fore Udder				+1.90	Strong
Rear Udder Height				+2.16	High
Udder Depth				+0.77	Shallow
Udder Support				+1.43	Strong
Rear Teat Placement				+0.19	Close
Teat Length				+1.66	Long
Teat Placement				+0.03	Close
Teat Placement Side				0.00	
Overall Body				+0.76	
Overall Dairy				+0.68	
Overall Feet & Legs				+1.83	
Overall Type				+1.64	
Overall Udder				+1.62	

- Red Aikman son
- High protein cow family
- Same family as Fraiko, Acme, Jotan

ICBF TYPE PROOF 12/2014

	-2	-1	1	2	
Angularity				+0.93	Angular
Stature				+2.01	Tall
Body Depth				+0.20	Shallow
Chest Width				+0.38	Wide
Frame				0.00	
Foot Angle				+1.65	Steep
Rear Legs-Set				-0.58	Sickled
Locomotion				+2.53	Excellent
Bad Condition Score				+0.18	High
Rump Angle				+1.89	Low
Rump Width				+1.32	Wide
Fore Udder				+2.70	Strong
Rear Udder Height				+2.31	High
Udder Depth				+2.26	Shallow
Udder Support				-0.03	Weak
Rear Teat Placement				+0.00	
Teat Length				+3.32	Long
Teat Placement				-0.55	Wide
Teat Placement Side				0.00	
Overall Body				0.00	
Overall Dairy				0.00	
Overall Feet & Legs				+1.64	
Overall Type				+2.08	
Overall Udder				+1.76	

aAa: 234

- Milking daughters in several countries
- Nice Balanced type animal

View-Home Powerball-P s2230



VIEW-HOME POWERBALL-P, TV TL TY

Sire: DA-SO-Burn MOM Earnhardt, VG86 TV TL TY
Dam: Scientific Gold Dish Rae RC, VG88 DOM
 02-05 3x 305 13,395kg 535 4.0% 469 3.5%P
MGS: Braedale Goldwyn, TV TL TY GP EXTRA '05
MGD: Scientific Debutante Rae, EX92 GMD DOM 3*
 02-02 2x 305 12,247kg 540 4.4% 415 3.4%P
MGGS: Regancrest Elton Durham-ET, EX90 GM BL TV
MGGD: Scientific Jubilant Rae RC, EX90 DOM
 05-11 3x 305 14,910 kg 637 4.3% 533 3.6%P



Index	Euro	Rel	Milk Sub Index	PTA	Rel
EBI	131	13%	Milk (Kg)	523	15%
Milk Sub Index	78	15%	Fat (Kg)	15	15%
Fertility Sub Index	24	14%	Prot (Kg)	16	15%
Calving Sub Index	30	15%	Fat (%)	-0.09	15%
Calv Int (Days)	-0.50	14%	Protein (%)	-0.02	15%

aAa : 243

ICBF TYPE PROOF 12/2014

	-2	-1	1	2	
Angularity				+0.87	Angular
Stature				+1.14	Tall
Body Depth				-0.14	Shallow
Chest Width				-0.86	Narrow
Frame				+0.00	
Foot Angle				+0.97	Steep
Rear Legs-Set				-0.28	Straight
Locomotion				+1.06	Excellent
Bad Condition Score				-0.56	Low
Rump Angle				-0.62	High
Rump Width				+1.02	Wide
Fore Udder				+1.41	Strong
Rear Udder Height				+2.04	High
Udder Depth				+1.55	Shallow
Udder Support				+1.81	Strong
Rear Teat Placement				+0.98	Close
Teat Length				-0.10	Short
Teat Placement				+1.16	Close
Teat Placement Side				0.00	
Overall Body				+0.76	
Overall Dairy				+0.68	
Overall Feet & Legs				+1.28	
Overall Type				+1.90	
Overall Udder				+1.75	

COMING SOON

View-Home Cashflow

VIEW-HOME CASHFLOW, TV TL TY

Sire: Farnear-TBR-BH Cashcoin, TV TL TY
Dam: Pine-Tree 2149Robst 4846, VG86
 02-04 3x 305 26,400lbs 1400 5.2% 800 3.1%P
MGS: Roylane Socra Robust, VG88 TV TL TY
MGD: Pine-Tree Zenith Sheen, VG87
 01-11 3x 305 11,113kg 435 3.9% 915 3.4%P
MGGS: Ocean-View Zenith, TV TL TY GM
MGGD: Pine-Tree Martha Sheen, VG86 DOM 4*
 01-11 3x 305 12,134kg 488 4.0% 391 3.2%P



Stantons Main Event



EDG Rubicon



STANTONS MAINEVENT, TV TL TY

Sire: Mountfield SSI DCY Mogul, TV TL TY
Dam: Stantons Super Elda, GP83 2yr
 02-01 3x 305 12,639kg 500 4.0% 408 3.3%P
MGS: Charlesdale Superstition, GM'12 TV TL TY
MGD: Wabash-Way Evett, VG86 2yr DOM 14*
 02-02 2x 305 12,909kg 594 4.6% 410 3.2%P
MGGS: Picston Shottle-ET, TV TL EX-95 GM
MGGD: Crockett-Acres Elita, VG87 GMD DOM 3*
 02-02 2x 305 15,486kg 581 3.8% 542 3.5%P



ICBF

Index	Euro	Rel	Milk Sub Index	PTA	Rel
EBI	152	20%	Milk (Kg)	492	24%
Milk Sub Index	56	24%	Fat (Kg)	13	24%
Fertility Sub Index	65	19%	Prot (Kg)	13	24%
Calving Sub Index	29	23%	Fat (%)	-0.11	24%
Calv Int (Days)	-1.79	20%	Protein (%)	-0.06	24%

ICBF TYPE PROOF 12/2014

	-2	-1	1	2	
Angularity				+1.23	Angular
Stature				+1.61	Tall
Body Depth				+1.08	Deep
Chest Width				+0.73	Wide
Frame				+0.00	
Foot Angle				+2.00	Steep
Rear Legs-Set				-1.14	Straight
Locomotion				+2.17	Excellent
Bad Condition Score				-0.69	Low
Rump Angle				+0.47	Low
Rump Width				+1.49	Wide
Fore Udder				+3.22	Strong
Rear Udder Height				+2.89	High
Udder Depth				+2.33	Shallow
Udder Support				+1.89	Strong
Rear Teat Placement				+0.44	Close
Teat Length				-0.19	Short
Teat Placement				+2.37	Close
Teat Placement Side				0.00	
Overall Body				+0.56	
Overall Dairy				+0.33	
Overall Feet & Legs				+2.17	
Overall Type				+2.91	
Overall Udder				+2.64	

aAa : 231

- One of the highest GTPI sires available
- International Sire of Sons

EDG RUBICON, TV TL TY

Sire: Mountfield SSI DCY Mogul, TV TL TY
Dam: Sandy-Valley Robust Ruby, VG86 2yr
 02-04 2x 305 13,358kg 431 3.2% 440 3.3%P
MGS: Roylane Socra Robust, VG88 TV TL TY
MGD: Sandy-Valley Plane Sapphire, VG87 2yr
 02-00 2x 305 15,182kg 504 3.3% 450 3.0%P
MGGS: Ensenda Taboo Planet, EX90 GM'11 EXTRA'12
MGGD: Sandy-Valley Bolt Sheila, EX92 2E
 05-07 2x 305 16,683kg 598 3.6% 503 3.0%P



ICBF

Index	Euro	Rel	Milk Sub Index	PTA	Rel
EBI	119	18%	Milk (Kg)	558	22%
Milk Sub Index	65	22%	Fat (Kg)	17	22%
Fertility Sub Index	27	18%	Prot (Kg)	15	22%
Calving Sub Index	30	20%	Fat (%)	-0.07	22%
Calv Int (Days)	0.46	19%	Protein (%)	-0.07	22%

ICBF TYPE PROOF 12/2014

	-2	-1	1	2	
Angularity				+1.52	Angular
Stature				+1.23	Tall
Body Depth				+0.93	Deep
Chest Width				+0.05	Wide
Frame				+0.00	
Foot Angle				+2.04	Steep
Rear Legs-Set				-0.90	Straight
Locomotion				+2.68	Excellent
Bad Condition Score				-1.35	Low
Rump Angle				-0.03	High
Rump Width				+1.59	Wide
Fore Udder				+3.29	Strong
Rear Udder Height				+3.40	High
Udder Depth				+2.00	Shallow
Udder Support				+1.96	Strong
Rear Teat Placement				+0.24	Close
Teat Length				-0.74	Short
Teat Placement				+2.49	Close
Teat Placement Side				0.00	
Overall Body				+0.18	
Overall Dairy				+0.21	
Overall Feet & Legs				+2.39	
Overall Type				+3.14	
Overall Udder				+2.86	

aAa : 432

- No. 1 GTPI Sire
- Sire of Sons
- International appeal
- Limited Availability

Farnear-TBR-BH Cashmoney S1569



Farnear-TBR-BH Cashcoin S1461



FARNEAR-TBR-BH CASHMONEY-ET TV TL TY

Sire: DE-SU Observer- ET TR TV TL TD TY, VG86
Dam: Ms Chassity Goldwyn Cash-ET, VG87 2yr CAN
 02-04 2x P187 14,862kg 627 4.2% 477 3.2%P
MGS: Braedale Goldwyn, TV TL TY GP EXTRA '05
MGD: Regancrest-S Chassity-ET, TV TL TY, EX92 DOM
 02-01 2x 305 14,470kg 629 4.3% 474 3.3%P
MGGs: Picston Shottle-ET, TV TL EX-95 GM
MGGD: Regancrest Cinderella, EX92 2E GMD DOM 2*
 05-00 2x 305 13,349kg 551 4.1% 410 3.1%P



ICBF

Index	Euro	Rel	Milk Sub Index	PTA	Rel
EBI	193	59%	Milk (Kg)	519	72%
Milk Sub Index	85	72%	Fat (Kg)	19	72%
Fertility Sub Index	68	58%	Prot (Kg)	17	72%
Calving Sub Index	36	57%	Fat (%)	-0.01	72%
Calv Int (Days)	-1.55	60%	Protein (%)	0.00	72%

ICBF TYPE PROOF 12/2014

	-2	-1	1	2	
Angularity					+2.42 Angular
Stature					+2.34 Tall
Body Depth					+1.42 Deep
Chest Width					-0.76 Narrow
Frame					+0.00
Foot Angle					+0.12 Steep
Rear Legs-Set					+0.25 Sickled
Locomotion					+2.99 Excellent
Bad Condition Score					-1.68 Low
Rump Angle					+1.34 Low
Rump Width					+2.50 Wide
Fore Udder					+3.69 Strong
Rear Udder Height					+3.02 High
Udder Depth					+2.87 Shallow
Udder Support					+3.56 Strong
Rear Teat Placement					+1.60 Close
Teat Length					-2.71 Short
Teat Placement					+2.41 Close
Teat Placement Side					+0.00
Overall Body					+1.08
Overall Dairy					+0.85
Overall Feet & Legs					+3.70
Overall Type					+3.51
Overall Udder					+3.52

aAa: 324

- Easy calving
- Sire of sons
- Show type
- Early daughters creating excitement

FARNEAR-TBR-BH CASHCOIN-ET TV TL TY

Sire: DE-SU Observer- ET TR TV TL TD TY, VG86
Dam: Ms Chassity Goldwyn Cash-ET, VG87 2yr CAN
 02-04 2x P187 14,862kg 627 4.2% 477 3.2%P
MGS: Braedale Goldwyn, TV TL TY GP EXTRA '05
MGD: Regancrest-S Chassity-ET, TV TL TY, EX92 DOM
 02-01 2x 305 14,470kg 629 4.3% 474 3.3%P
MGGs: Picston Shottle-ET, TV TL EX-95 GM
MGGD: Regancrest Cinderella, EX92 2E GMD DOM 2*
 05-00 2x 305 13,349kg 551 4.1% 410 3.1%P



ICBF

Index	Euro	Rel	Milk Sub Index	PTA	Rel
EBI	226	61%	Milk (Kg)	654	73%
Milk Sub Index	81	73%	Fat (Kg)	21	73%
Fertility Sub Index	106	60%	Prot (Kg)	17	73%
Calving Sub Index	36	60%	Fat (%)	-0.06	73%
Calv Int (Days)	-4.12	62%	Protein (%)	-0.07	73%

ICBF TYPE PROOF 12/2014

	-2	-1	1	2	
Angularity					+1.57 Angular
Stature					+1.48 Tall
Body Depth					-0.68 Shallow
Chest Width					-1.85 Narrow
Frame					0.00
Foot Angle					-0.25 Low
Rear Legs-Set					+0.08 Sickled
Locomotion					+2.84 Excellent
Bad Condition Score					-1.16 Low
Rump Angle					+0.55 Low
Rump Width					+1.92 Wide
Fore Udder					+3.96 Strong
Rear Udder Height					+4.28 High
Udder Depth					+3.95 Shallow
Udder Support					+3.86 Strong
Rear Teat Placement					+1.04 Close
Teat Length					-1.46 Short
Teat Placement					+1.35 Close
Teat Placement Side					0.00
Overall Body					+1.08
Overall Dairy					+0.85
Overall Feet & Legs					+3.29
Overall Type					+3.31
Overall Udder					+3.72

aAa: 135

- International demand
- Sire of sons
- Show type calves

Boldi VSG Anton S2050



Stantons Camaro S2048



BOLDI V S G ANTON, VG 1YR TV TL TY

Sire: Generations Epic, EX92. TV TL TY
Dam: Velthuis SG MOM Alisa, VG 87 2yr
 02-02 2x 305 12,367kg 458 3.7% 380 3.1%P
MGS: Long-Langs Oman Oman, VG GM* 10 TV TL TY
MGD: Allyndale-I Goldwyn Albany, VG87 3*
 02-03 2x 365 15,210kg 645 4.2% 486 3.2%P
MGGs: Braedale Goldwyn, TV TL TY GP EXTRA '05
MGGD: MD-Delight Durham Atlee, EX92 6*



ICBF

Index	Euro	Rel	Milk Sub Index	PTA	Rel
EBI	125	24%	Milk (Kg)	499	28%
Milk Sub Index	69	28%	Fat (Kg)	14	28%
Fertility Sub Index	32	22%	Prot (Kg)	15	28%
Calving Sub Index	23	31%	Fat (%)	-0.09	28%
Calv Int (Days)	-0.58	23%	Protein (%)	-0.03	28%

STANTONS CAMARO, VG 1YR TV TL TY

Sire: Generations Epic, EX92. TV TL TY
Dam: Stantons Freddie Cameo, VG 2yr
 02-02 2x 365 13,826kg 680 4.9% 483 3.5%P
MGS: Badger-Bluff Fannie Freddie, TV TL TY
MGD: Stantons Lucky Cameo, VG89
 03-09 2x 365 19,612kg 917 4.1% 661 3.4%P
MGGs: Bofran Lucky Star, VG EXTRA 05 TV TL TY
MGGD: Sher-Est Mtoto Sharon, VG 5*
 03-08 2x 365 15,186kg 659 4.3% 509 3.4%P



ICBF

Index	Euro	Rel	Milk Sub Index	PTA	Rel
EBI	210	54%	Milk (Kg)	500	67%
Milk Sub Index	72	67%	Fat (Kg)	18	67%
Fertility Sub Index	86	52%	Prot (Kg)	15	67%
Calving Sub Index	48	51%	Fat (%)	-0.03	67%
Calv Int (Days)	-2.67	54%	Protein (%)	-0.02	67%

ICBF TYPE PROOF 12/2014

	-2	-1	1	2	
Angularity					+1.20 Angular
Stature					+2.24 Tall
Body Depth					+0.95 Deep
Chest Width					+0.37 Wide
Frame					0.00
Foot Angle					+1.80 Steep
Rear Legs-Set					-1.04 Straight
Locomotion					+1.84 Excellent
Bad Condition Score					-0.03 Low
Rump Angle					+0.43 Low
Rump Width					+1.62 Wide
Fore Udder					+1.99 Strong
Rear Udder Height					+2.75 High
Udder Depth					+2.22 Shallow
Udder Support					+2.55 Strong
Rear Teat Placement					+0.23 Close
Teat Length					+0.12 Long
Teat Placement					+1.05 Close
Teat Placement Side					0.00
Overall Body					+0.13
Overall Dairy					-0.21
Overall Feet & Legs					+2.03
Overall Type					+2.59
Overall Udder					+2.26

aAa: 423

- High Type Epic Son
- Combines the best from the Elita & Atlee cow families
- International Sire of Sons

ICBF TYPE PROOF 12/2014

	-2	-1	1	2	
Angularity					+1.33 Angular
Stature					+1.41 Tall
Body Depth					+0.74 Shallow
Chest Width					+0.71 Wide
Frame					0.00
Foot Angle					+0.96 Steep
Rear Legs-Set					-1.13 Sickled
Locomotion					+1.56 Excellent
Bad Condition Score					-0.83 Low
Rump Angle					-0.38 High
Rump Width					+1.17 Wide
Fore Udder					+2.66 Strong
Rear Udder Height					+1.94 High
Udder Depth					+2.29 Shallow
Udder Support					+1.97 Strong
Rear Teat Placement					+0.27 Close
Teat Length					-0.32 Short
Teat Placement					+0.78 Close
Teat Placement Side					0.00
Overall Body					+0.54
Overall Dairy					+0.78
Overall Feet & Legs					+2.02
Overall Type					+2.03
Overall Udder					+1.74

aAa: 351

- International Sire of Sons
- A2A2

Genervation LiquidGold S1615



Gen-I-Beq Aikman, RC S1623



GENERVATIONS LIQUID GOLD, VG87 2YR,TV TL

Sire: Mapelwood Boulder-ET TV TL TY, VG 1yr
Dam: OConnors Planet Lucia, VG86 2yr CAN
MGS: Ensenda Taboo Planet-ET EX90 GM'11 EX'12, TV TL TY
MGD: Comestar Goldwyn Lilac, VG89
 02-03 2x 305 14,556kg 671 4.6% 541 3.7%P
MGGs: Braedale Goldwyn, TV TL TY GP EXTRA '05
MGGD: Lylehaven Lila Z, EX94-CAN 13*
 04-05 2x 305 19,488kg 789 4.0% 674 3.5%P

GEN-I-BEQ AIKMAN, TV TL TY RC

Sire: Flevo Genetics Snowman , TV
Dam: KHW-I Aika Baxter, VG89
 02-01 2x 305 11,770kg 676 5.7% 427 3.6%P
MGS: Emerald-Acr-Sa T-Baxter, EX91 EX"10, TV TL TY
MGD: KHW Goldwyn Aiko-ET EX 91 92MS DOM RC
 02-06 2x 365 11,186kg 711 6.4% 446 4.0%P
MGGs: Braedale Goldwyn, TV TL TY GP EXTRA '05
MGGD: Kamps-Hollow Altitude, EX95 2E GMD DOM
 02-00 2x 305 11,118kg 418 3.8% 410 3.7%P



ICBF

Index	Euro	Rel	Milk Sub Index	PTA	Rel
EBI	135	51%	Milk (Kg)	493	63%
Milk Sub Index	77	63%	Fat (Kg)	17	63%
Fertility Sub Index	49	47%	Prot (Kg)	16	63%
Calving Sub Index	20	53%	Fat (%)	-0.03	63%
Calv Int (Days)	-1.62	63%	Protein (%)	-0.01	63%



ICBF

Index	Euro	Rel	Milk Sub Index	PTA	Rel
EBI	125	60%	Milk (Kg)	623	71%
Milk Sub Index	82	71%	Fat (Kg)	23	71%
Fertility Sub Index	-5	59%	Prot (Kg)	17	71%
Calving Sub Index	40	61%	Fat (%)	-0.01	71%
Calv Int (Days)	2.29	60%	Protein (%)	-0.05	71%

ICBF TYPE PROOF 12/2014

	-2	-1	1	2	
Angularity					+1.72 Angular
Stature					+2.00 Tall
Body Depth					+1.38 Deep
Chest Width					-0.27 Narrow
Frame					0.00
Foot Angle					+1.34 Steep
Rear Legs-Set					+0.04 Straight
Locomotion					+3.12 Excellent
Bad Condition Score					-0.80 Low
Rump Angle					+0.28 Low
Rump Width					+2.20 Wide
Fore Udder					+1.91 Strong
Rear Udder Height					+3.06 High
Udder Depth					+1.81 Shallow
Udder Support					+3.77 Strong
Rear Teat Placement					+1.56 Close
Teat Length					+1.27 Long
Teat Placement					+2.22 Close
Teat Placement Side					0.00
Overall Body					+0.39
Overall Dairy					+0.42
Overall Feet & Legs					+3.34
Overall Type					+3.15
Overall Udder					+2.66

aAa : 135

- Early Mapelwood Boulder son
- International sire of sons
- Outcross, Boulder x Planet

ICBF TYPE PROOF 12/2014

	-2	-1	1	2	
Angularity					+2.16 Angular
Stature					+1.69 Tall
Body Depth					+1.10 Deep
Chest Width					-0.96 Narrow
Frame					0.00
Foot Angle					+1.49 Steep
Rear Legs-Set					-1.24 Sickled
Locomotion					+1.48 Excellent
Bad Condition Score					-1.82 Low
Rump Angle					+0.73 Low
Rump Width					+2.16 Wide
Fore Udder					+2.65 Strong
Rear Udder Height					+4.00 High
Udder Depth					+1.43 Shallow
Udder Support					+2.75 Strong
Rear Teat Placement					+1.28 Close
Teat Length					+1.14 Long
Teat Placement					+1.39 Close
Teat Placement Side					0.00
Overall Body					+0.76
Overall Dairy					+0.68
Overall Feet & Legs					+3.42
Overall Type					+3.66
Overall Udder					+2.85

aAa : 453

- Worldwide recognition
- International sire of sons
- Red factor snowman

Bartels Prompt Springson s1395



Zani Bolton Mascalese s1514



BARTELS PROMPT SPRINGSON-ET TV TL TY

Sire: Picston Shottle-ET, TV TL EX-95 GM
Dam: Windy-Knoll-View Pledge-ET EX-95 2E GMD DOM
 04-01 2x 365 18,684kg 715 3.8% 596 3.2%P
MGS: Comestar Outside-ET TV TL EX-95
MGD: Windy-Knoll-View Promis-ET TV TL EX-95 2E GMD DOM
 04-08 2x 305 16,492kg 625 3.7% 565 3.3%P
MGGs: Startmore Rudolph-ET, TV TL EX-CAN
MGGD: Windy-Knoll-View-Ultimate Pala, EX-94 3E DOM
 05-08 2x 305 11,204kg 494 4.4% 363 3.2%P



ICBF

Index	Euro	Rel	Milk Sub Index	PTA	Rel
EBI	83	58%	Milk (Kg)	359	70%
Milk Sub Index	48	70%	Fat (Kg)	13	70%
Fertility Sub Index	4	55%	Prot (Kg)	10	70%
Calving Sub Index	30	75%	Fat (%)	-0.01	70%
Calv Int (Days)	0.21	58%	Protein (%)	-0.03	70%

ZANI-BOLTON MASCALESE, TV TL TY

Sire: Sandy-Valley Bolton, EX90, GM'10, EX'10
Dam: Zani O-Man-Oriella, GP84 2yr
 02-00 2x 305 14,226kg 564 4.0% 579 4.1%P
MGS: O-Bee Marfred Justice, TV TL
MGD: Zani Adam Jennifer, VG88
 03-02 2x 18,103kg 734 4.1% 681 3.8%P
MGGs: Timlynn Adam , TV TL GM'08
MGGD: Zani Emerson Emily, VG86
 04-06 2x 305 18,557kg 714 3.8% 654 3.5%P



ICBF

Index	Euro	Rel	Milk Sub Index	PTA	Rel
EBI	107	52%	Milk (Kg)	625	68%
Milk Sub Index	73	68%	Fat (Kg)	16	68%
Fertility Sub Index	-6	48%	Prot (Kg)	17	68%
Calving Sub Index	32	52%	Fat (%)	-0.13	68%
Calv Int (Days)	1.49	50%	Protein (%)	-0.06	68%

ICBF TYPE PROOF 12/2014

	-2	-1	1	2	
Angularity					+1.44 Angular
Stature					+1.63 Tall
Body Depth					+0.83 Deep
Chest Width					+0.54 Narrow
Frame					0.00
Foot Angle					+0.23 Steep
Rear Legs-Set					-0.85 Sickled
Locomotion					+1.73 Excellent
Bad Condition Score					1.06 Low
Rump Angle					+1.43 Low
Rump Width					+2.38 Wide
Fore Udder					+1.99 Strong
Rear Udder Height					+1.91 High
Udder Depth					+0.91 Shallow
Udder Support					+1.53 Strong
Rear Teat Placement					0.00
Teat Length					-0.66 Short
Teat Placement					+1.41 Close
Teat Placement Side					0.00
Overall Body					0.00
Overall Dairy					0.00
Overall Feet & Legs					+1.39
Overall Type					+1.74
Overall Udder					+1.58

aAa : 234165

- High Type Shottle son from WindyKnollView Pledge, EX95 GMD DOM
- Great Feet & Legs
- Very consistent transmitter
- Outcross sire for Durham, Goldwyn & Oman pedigrees

ICBF TYPE PROOF 12/2014

	-2	-1	1	2	
Angularity					+2.30 Angular
Stature					+2.62 Tall
Body Depth					+1.81 Deep
Chest Width					+1.03 Narrow
Frame					0.00
Foot Angle					+1.87 Steep
Rear Legs-Set					-0.40 Sickled
Locomotion					+1.76 Excellent
Bad Condition Score					-0.13 Low
Rump Angle					+2.11 High
Rump Width					+3.74 Wide
Fore Udder					+3.12 Strong
Rear Udder Height					+2.91 High
Udder Depth					+2.30 Shallow
Udder Support					+1.99 Strong
Rear Teat Placement					0.00 Close
Teat Length					+0.61 Long
Teat Placement					+2.71 Close
Teat Placement Side					0.00
Overall Body					0.00
Overall Dairy					0.00
Overall Feet & Legs					+1.80
Overall Type					+2.68
Overall Udder					+2.64

aAa: 423561

- International Superstar
- Unique Sirestack
- Worldwide respect

Mr Chassity Colt 45 S1573



MR CHASSITY COLT 45-ET RC PO TV TL TY

Sire: Sandy-Valley Colt-P Red-TW PO TV TL TY TD
Dam: Regancrest-S Chassity-ET, TV TL TY, EX92 DOM
 02-01 2x 305 14,470kg 629 4.3% 474 3.3%P
MGS: Picston Shottle-ET, TV TL EX-95 GM
MGD: Regancrest Cinderella, EX92 2E GMD DOM 2*
 05-00 2x 305 13,349kg 551 4.1% 410 3.1%P
MGGs: Calbrett-I HH Champion- ET TV TL EX Extra
MGGD: Regancrest-PR Barbie-ET, EX92 GMD DOM 3*
 02-06 2x 305 12,120kg 478 3.9% 401 3.3%P



ICBF

Index	Euro	Rel	Milk Sub Index	PTA	Rel
EBI	142	41%	Milk (Kg)	578	54%
Milk Sub Index	51	54%	Fat (Kg)	12	54%
Fertility Sub Index	66	37%	Prot (Kg)	14	54%
Calving Sub Index	37	42%	Fat (%)	-0.17	54%
Calv Int (Days)	-1.88	40%	Protein (%)	-0.09	54%

ICBF TYPE PROOF 12/2014

	-2	-1	1	2	
Angularity				+0.77	Angular
Stature				+1.87	Tall
Body Depth				+0.20	Deep
Chest Width				+0.05	Wide
Frame				0.00	
Foot Angle				+1.47	Steep
Rear Legs-Set				-2.32	Straight
Locomotion				+1.97	Excellent
Bad Condition Score				-0.07	Low
Rump Angle				-0.78	High
Rump Width				+1.16	Wide
Fore Udder				+4.61	Strong
Rear Udder Height				+3.66	High
Udder Depth				+3.18	Shallow
Udder Support				+2.67	Strong
Rear Teat Placement				+1.01	Close
Teat Length				+1.31	Long
Teat Placement				+2.97	Close
Teat Placement Side				+0.00	
Overall Body				+1.04	
Overall Dairy				+0.70	
Overall Feet & Legs				+3.18	
Overall Type				+3.14	
Overall Udder				+3.58	

aAa : 531

- A RC Polled son from Chassity herself
- Creating worldwide interest
- Outcross sire

New Farm Britt Prince S1513



NEW FARM BRITT PRINCE, TV TL TY

Sire: Fantasy Britt Gap, TV TL TY
Dam: New Farm Mtoto Quota , VG88
MGS: Carol Prelude Mtoto , EX91 TV TL
MGD: Pizz-Farm Oca, GP84
MGGs: Sabbonia Skywalker, TV TL
MGGD: Pizz-Farm Girbella



ICBF

Index	Euro	Rel	Milk Sub Index	PTA	Rel
EBI	152	64%	Milk (Kg)	245	83%
Milk Sub Index	28	83%	Fat (Kg)	7	83%
Fertility Sub Index	99	72%	Prot (Kg)	6	83%
Calving Sub Index	25	66%	Fat (%)	-0.04	83%
Calv Int (Days)	-3.30	79%	Protein (%)	-0.03	83%

ICBF TYPE PROOF 12/2013

	-2	-1	1	2	
Angularity				+1.28	Angular
Stature				+0.47	Tall
Body Depth				+0.71	Deep
Chest Width				-0.33	Narrow
Frame				0.00	
Foot Angle				+1.76	Steep
Rear Legs-Set				-0.73	Straight
Locomotion				+3.95	Excellent
Bad Condition Score				-1.30	Low
Rump Angle				+0.82	Low
Rump Width				+1.74	Wide
Fore Udder				-0.38	Weak
Rear Udder Height				+0.97	High
Udder Depth				+0.18	Shallow
Udder Support				+1.21	Strong
Rear Teat Placement				+0.00	
Teat Length				-0.66	Short
Teat Placement				-0.12	Wide
Teat Placement Side				0.00	
Overall Body				0.00	
Overall Dairy				0.00	
Overall Feet & Legs				+3.78	
Overall Type				+1.87	
Overall Udder				+0.62	

aAa: 234165

- Outcross sire
- Easy Calving

Bitansho S1512



BITANSHO, TV TL TY

Sire: Alzi Juror Ford TV TL
Dam: Alzi Southwind Carla
MGS: Southwind Bell of Bar-Lee
MGD: Ubalda
MGGS: Hanoverhill Starbuck
MGGD: Rosina



ICBF

Index	Euro	Rel	Milk Sub Index	PTA	Rel
EBI	139	57%	Milk (Kg)	450	80%
Milk Sub Index	52	80%	Fat (Kg)	10	80%
Fertility Sub Index	50	51%	Prot (Kg)	12	80%
Calving Sub Index	26	49%	Fat (%)	-0.12	80%
Calv Int (Days)	-2.83	58%	Protein (%)	-0.04	80%

ICBF TYPE PROOF 12/2014

	-2	-1	1	2	
Angularity					+0.48 Angular
Stature					+0.67 Tall
Body Depth					+0.41 Deep
Chest Width					+0.33 Wide
Frame					0.00
Foot Angle					+0.62 Steep
Rear Legs-Set					-0.17 Straight
Locomotion					+0.39 Excellent
Bad Condition Score					+0.45 High
Rump Angle					+2.54 Low
Rump Width					+1.17 Wide
Fore Udder					+2.04 Strong
Rear Udder Height					+0.94 High
Udder Depth					+1.38 Shallow
Udder Support					+1.43 Strong
Rear Teat Placement					0.00
Teat Length					-0.52 Short
Teat Placement					+1.54 Close
Teat Placement Side					0.00
Overall Body					0.00
Overall Dairy					0.00
Overall Feet & Legs					+0.67
Overall Type					+1.26
Overall Udder					+1.31

aAa: 315

- Unusual pedigree, Shottle x Juror Ford
- Easy calving
- No Goldwyn, Oman or Durham

Mapelwood Brewmaster S1343



MAPELWOOD BREWMMASTER-ET EX93 TV TL TY

Sire: Schillview Garrett, GM"10 TV TL TY
Dam: Gen-I-Beq Shottle Bombi, EX92 3*
 02-01 2x 305 12,378kg 607 4.9% 417 3.4%P
MGS: Picston Shottle-ET, TV TL EX-95 GM
MGD: Gen-I-Beq Champion Bambi, EX90 4*
 02-02 2x 305 10,409kg 438 4.2% 352 3.4%P
MGGS: Calbrett-I HH Champion- ET TV TL EX Extra
MGGD: Braedale Baler Twine, VG86 32*
 02-01 2x 305 12,096kg 591 4.9% 402 3.3%P



ICBF

Index	Euro	Rel	Milk Sub Index	PTA	Rel
EBI	143	69%	Milk (Kg)	468	79%
Milk Sub Index	57	79%	Fat (Kg)	21	79%
Fertility Sub Index	55	68%	Prot (Kg)	12	79%
Calving Sub Index	26	72%	Fat (%)	0.06	79%
Calv Int (Days)	-2.40	69%	Protein (%)	-0.06	79%

ICBF TYPE PROOF 12/2014

	-2	-1	1	2	
Angularity					+1.52 Angular
Stature					+1.92 Tall
Body Depth					+0.67 Deep
Chest Width					-0.17 Narrow
Frame					0.00
Foot Angle					+2.00 Steep
Rear Legs-Set					-1.78 Sickled
Locomotion					+1.78 Excellent
Bad Condition Score					-0.60 Low
Rump Angle					+0.51 Low
Rump Width					+1.90 Wide
Fore Udder					+2.40 Strong
Rear Udder Height					+3.10 High
Udder Depth					+2.07 Shallow
Udder Support					+2.04 Strong
Rear Teat Placement					+1.08 Close
Teat Length					-0.27 Short
Teat Placement					+1.60 Close
Teat Placement Side					0.00
Overall Body					+1.87
Overall Dairy					+0.86
Overall Feet & Legs					+2.56
Overall Type					+2.59
Overall Udder					+2.68

aAa: 426

- Maternal brother to Boulder
- Garrett x Shottle Bombi herself
- A2/A2
- No Planet in Goldwyn blood
- Milking daughters classifying well

Generations Lexor S1224



Rocca-DG Snowfall S2118



GENERATIONS LEXOR, EX91 TV TL TY

Sire: Long-Langs Oman Oman, VG GM¹⁰ TV TL TY
Dam: Comestar Goldwyn Lilac, VG89
 02-03 2x 305 14,556kg 671 4.6% 541 3.7%P
MGS: Braedale Goldwyn, TV TL TY GP EXTRA '05
MGD: Lylehaven Lila Z, EX94-CAN 13*
 04-05 2x 305 19,488kg 789 4.0% 674 3.5%P
MGGS: Regancrest Elton Durham-ET, EX90 GM BL TV
MGGD: Lylehaven Form Laura, EX94 3E GMD DOM 6*
 08-08 2x 305 15,440kg 590 3.8% 468 3.0%P

ROCCA-DG SNOWFALL TV TL TY

Sire: Flevo Genetics Snowman, TV
Dam: Vendairy Breesh, VG86
 01-11 2x 305 10,067kg 397 3.9% 324 3.2%P
MGS: Regancrest HHF Mac, EX92 TV TL TY
MGD: Regancrest Breeshia
MGGS: Picston Shottle-ET, TV TL EX-95 GM
MGGD: Regancrest PR Barbie, EX92 GMD DOM 14*
 02-06 2x 305 12,120kg 478 3.9% 401 3.3%P



ICBF

Index	Euro	Rel	Milk Sub Index	PTA	Rel
EBI	136	57%	Milk (Kg)	476	69%
Milk Sub Index	81	69%	Fat (Kg)	16	69%
Fertility Sub Index	35	53%	Prot (Kg)	16	69%
Calving Sub Index	27	61%	Fat (%)	-0.04	69%
Calv Int (Days)	-0.91	55%	Protein (%)	0.01	69%



ICBF

Index	Euro	Rel	Milk Sub Index	PTA	Rel
EBI	103	26%	Milk (Kg)	622	32%
Milk Sub Index	60	32%	Fat (Kg)	15	32%
Fertility Sub Index	7	25%	Prot (Kg)	15	32%
Calving Sub Index	36	28%	Fat (%)	-0.16	32%
Calv Int (Days)	0.86	26%	Protein (%)	-0.09	32%

ICBF TYPE PROOF 12/2014

	-2	-1	1	2	
Angularity				+1.32	Angular
Stature				+2.13	Tall
Body Depth				+1.12	Deep
Chest Width				+0.27	Wide
Frame				0.00	
Foot Angle				+1.86	Steep
Rear Legs-Set				-1.47	Straight
Locomotion				+2.13	Excellent
Bad Condition Score				-0.34	Low
Rump Angle				-0.72	High
Rump Width				+0.82	Wide
Fore Udder				+1.43	Strong
Rear Udder Height				+3.18	High
Udder Depth				+2.34	Shallow
Udder Support				+3.87	Strong
Rear Teat Placement				+1.84	Close
Teat Length				+0.91	Long
Teat Placement				+1.38	Close
Teat Placement Side				0.00	
Overall Body				+1.41	
Overall Dairy				+1.29	
Overall Feet & Legs				+2.80	
Overall Type				+2.89	
Overall Udder				+2.48	

aAa: 342

- International sire of sons
- Man-O-Man x Comestar Goldwyn Lilac
- Milking daughters really impressing

ICBF TYPE PROOF 12/2014

	-2	-1	1	2	
Angularity				+1.62	Angular
Stature				+1.81	Tall
Body Depth				+1.22	Deep
Chest Width				-0.33	Narrow
Frame				0.00	
Foot Angle				+2.36	Steep
Rear Legs-Set				-1.59	Straight
Locomotion				+1.85	Excellent
Bad Condition Score				-0.68	Low
Rump Angle				+0.37	Low
Rump Width				+2.12	Wide
Fore Udder				+2.13	Strong
Rear Udder Height				+2.70	High
Udder Depth				+1.79	Shallow
Udder Support				+1.65	Strong
Rear Teat Placement				+0.81	Close
Teat Length				+1.46	Long
Teat Placement				+1.59	Close
Teat Placement Side				0.00	
Overall Body				+0.52	
Overall Dairy				+1.51	
Overall Feet & Legs				+2.52	
Overall Type				+2.63	
Overall Udder				+2.16	

aAa: 234

- Snowman Son
- High Production
- Barbie cow family



aAa : 432561

Holbra Applejax-RC

S1368

Index	Euro	Rel	Milk Sub Index	PTA	Rel
EBI	152	56%	Milk (Kg)	266	67%
Milk Sub Index	36	67%	Fat (Kg)	8	67%
Fertility Sub Index	81	53%	Prot (Kg)	8	67%
Calving Sub Index	34	60%	Fat (%)	-0.05	67%
Calv Int (Days)	-2.66	55%	Protein (%)	-0.01	67%

- RC Superstition son
- One of the highest GTPI RC bulls in the World
- 4.0%P on the dam
- International sire of sons
- Mat brother to Fraiko

Sire: Charlesdale Superstition
Dam: KHW Goldwyn Aiko, EX91



ICBF



aAa : 342516

Ostretin Magua S1396

Index	Euro	Rel	Milk Sub Index	PTA	Rel
EBI	95	58%	Milk (Kg)	630	59%
Milk Sub Index	75	59%	Fat (Kg)	13	59%
Fertility Sub Index	-12	62%	Prot (Kg)	18	59%
Calving Sub Index	35	62%	Fat (%)	-0.19	59%
Calv Int (Days)	1.26	64%	Protein (%)	-0.05	59%

- Daughter proven
- First Homozygous polled bull on the market
- All his progeny will be polled/hornless so one less job to do
- In addition all progeny from his daughters will continue to breed polled/hornless progeny for the first generation
- Complete outcross pedigree, no Oman, Goldwyn, Durham or Shottle in the pedigree
- Can be used on any bloodlines

Sire: Aggravation Lawn Boy P-Red / Avo
Dam: Ostretin Mia



ICBF



aAa : 564

CrimeTime S2151

Index	Euro	Rel	Milk Sub Index	PTA	Rel
EBI	88	31%	Milk (Kg)	307	32%
Milk Sub Index	62	32%	Fat (Kg)	10	32%
Fertility Sub Index	12	29%	Prot (Kg)	12	32%
Calving Sub Index	15	43%	Fat (%)	-0.02	32%
Calv Int (Days)	0.36	30%	Protein (%)	-0.05	32%

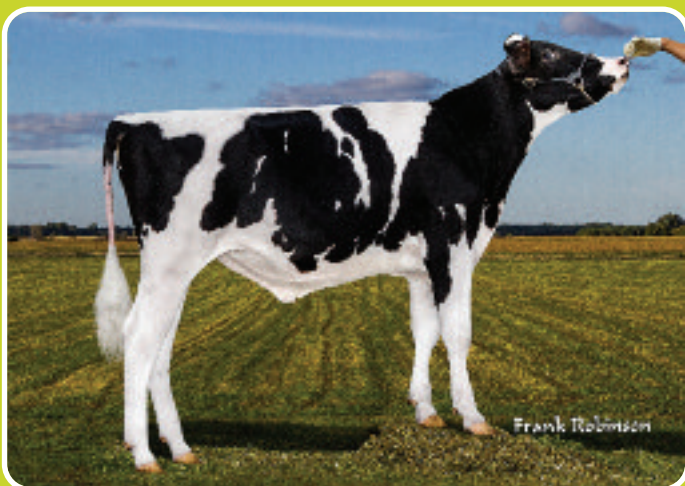
- Outcross sire
- aAa hard to find at 564
- Jerudo x Talent

Sire: Jerudo
Dam: Carolien 3681, VG86



ICBF

Mr Delicious Coin (Draco)



Index	Euro	Rel	Milk Sub Index	PTA	Rel
EBI	186	21%	Milk (Kg)	643	25%
Milk Sub Index	85	25%	Fat (Kg)	21	25%
Fertility Sub Index	69	21%	Prot (Kg)	18	25%
Calving Sub Index	2.63	23%	Fat (%)	-0.06	25%
Calv Int (Days)	-2.15	22%	Protein (%)	-0.06	25%

Sire: Farnear-TBR-BH Cashcoin, TV TL TY
Dam: Miss OCD Rbst Delicious, VG86 2yr DOM
 02-05 3x 365 33,778lbs 1121 3.3% 1047 3.1%P
MGS: Roylane Socra Robust, VG88 TV TL TY
MGD: OCD Planet Dancia, EX93
 03-01 3x 305 15,527kg 540 3.5% 482 3.1%P
MGGs: Ensenda Taboo Planet, EX90 GM'11 EXTRA'12
MGGD: Miss Elegant Delight , VG88 2yr DOM
 02-02 3x 305 12,633kg 435 3.4% 388 3.1%P



ICBF



aAa: 342

- International sire of sons
- Topping Index lists worldwide
- Early CashCoin son
- Rudoph Zip family

ICBF TYPE PROOF 12/2014

	-2	-1	1	2	
Angularity					+1.32 Angular
Stature					+1.04 Tall
Body Depth					-0.35 Shallow
Chest Width					-1.39 Narrow
Frame					0.00
Foot Angle					+0.14 Steep
Rear Legs-Set					+0.24 Sickled
Locomotion					+2.20 Excellent
Bad Condition Score					-1.01 Low
Rump Angle					+0.10 Low
Rump Width					+1.59 Wide
Fore Udder					+2.92 Strong
Rear Udder Height					+3.34 High
Udder Depth					+2.67 Shallow
Udder Support					+2.82 Strong
Rear Teat Placement					+0.64 Close
Teat Length					-1.40 Short
Teat Placement					+1.55 Close
Teat Placement Side					0.00
Overall Body					+0.66
Overall Dairy					+0.52
Overall Feet & Legs					+2.32
Overall Type					+2.75
Overall Udder					+2.93

OTHER BULLS AVAILABLE

AI Code	Name of Bull	EBI €	Milk SI €	Fertility SI €	Milk kgs	Fat kgs	Prot. kgs	Fat%	Protein%	Calving Int	SCC	Sire
S1411	Sisto	140	48	60	330	11	10	-0.03	-0.01	-1.62	-0.02	Snowman x Million
S1410	Magorian	140	91	26	533	18	18	-0.04	.01	.69	-0.01	Mascol x Oman
S1342	Generations Ludoplex	132	76	22	561	15	17	-.1	-.03	.99	-.21	Planet x Goldwyn
S1000	Crackhome Secure Red	39	48	-34	411	8	12	-0.14	-.03	2.65	-.13	Mr Burns x Goldwyn
S1393	KHW Elm-Park Acme RC	67	57	0	320	10	11	-0.04	.01	1.93	.05	Talent x Durham
S952	Jotan Red	75	49	19	199	9	9	.02	.04	-.30	.08	Jordan x Durham
S2056	Elwood Red	64	88	-35	604	18	19	-0.08	-0.02	3.34	-.13	Elayo x September
S1423	Jorck Red	83	65	4	307	17	11	.09	.03	2.17	-.03	Jotan x Mr Burns
S1263	Mapleridge Atlantic Red	84	33	21	234	6	7	-0.04	-0.01	-.54	-.09	Atlas x Goldwyn
S1312	Generations Windhammer	-68	48	-119	463	16	11	-0.03	-.08	8.72	.01	Bolton x Blitz
S2191	Sonnek Golddust	62	27	13	308	6	7	-0.11	-.05	.23	-.12	GoldChip x Damion
S1231	Generations Lexicon	73	58	-11	467	10	13	-0.14	-.03	1.80	-.04	Goldwyn x Durham
TFG	Toc-Farm Goldsun	-15	14	-28	216	3	5	-.1	-.05	3.09	-.13	Goldwyn x Allen
S1511	Toc-Farm Goldfish	-3	21	-22	238	6	5	-0.06	-.04	2.34	-.19	Goldwyn x Allen
UFB	UFM-DUBS AltaEsquire	136	84	34	369	20	15	.10	.04	-2.55	.04	Oman x Sam
S1230	Generations Lobo	123	69	30	400	14	14	-0.03	.01	-.82	-.11	Goldwyn x Durham
S2065	Wabash-Way Eaton	197	79	89	609	14	18	-0.16	-.05	-3.49	-.14	Superstition x Shottle
S1415	Macareno	124	90	8	314	16	15	.08	.09	.75	-.13	Man O Man x Goldwyn
S2057	Generations Lucid	139	69	38	601	11	17	-0.21	-.05	-.94	-.13	Colt P x Planet
S1669	Pine-Tree AltaOak	74	59	0	509	11	14	-0.14	-.06	1.12	-.09	Niagra x Leif
S1516	Sparkling	92	70	8	582	20	15	-0.03	-.07	.97	-.14	Goldwyn x Eland
ATN	Mr Atlees AltaAmazing	45	33	-26	341	10	8	-0.04	-.06	1.61	-.17	Goldwyn x Durham
S1460	Kiss AltaTimelt	206	79	90	310	15	14	.05	.07	-4.99	-.16	Big Time x Oman
S2175	Huijben DG Lauri	75	37	12	335	8	9	-0.08	-.04	0.18	-.09	Lauthority x Ramos
S2197	Anderstrup Evan	157	81	46	573	17	17	-0.08	-.02	-1.13	-.1	Massey x Man O Man
S2243	Mr Morningview Addition	159	84	38	528	17	17	-0.06	0.0	-.61	-.16	Bookem x Goldwyn
S2034	Butlerview Playball	133	88	10	726	17	20	-0.18	-.05	.37	-.14	Iota x Planet

HIGH EBI HOLSTEIN FRIESIAN SIRES

Forge Genetics was established in 2011 as a dairy farmer discussion group. The objective of the partnership was to advance the rate of genetic progress and profitability by identifying and breeding from the highest genetic potential bull calves proven from within grass based production systems with extensive animal event recording. Over the initial 3 years the project has delivered an elite group of genomically tested purebred and crossbred high EBI stock bulls and AI sires. The ambition of the group, in conjunction with Bova AI, is to provide dairy farmers with a selection of high EBI purebred dairy and crossbred AI sires suitable to grass-based milk production herds at affordable prices. We are now delighted to offer farmers high EBI AI sires with excellent fertility and milk solids at affordable prices.

Dam: Ballybride Siz Ringo



HB No: IE151623492624
DOB: 07.02.2013

Breeder: William O'Leary, Cork
% Ho: HO 84% FR 16%.
Ped: LHZ x SIZ x BWZ

Pedigree

Sire: Lauragh Evert
Dam: Ballybride Siz Ringo
MGS: Shine Dano

ICBF Interbull Conversions 12/14			Milk Sub Index	PTA	Rel%
Index	Euro	Rel %	Milk kg		
EBI	318	49	Fat kg	102	61
Milk	96	61	Prot kg	17	61
Fertility	171	43	Fat %	13	61
Calving	39	50	Prot %	0.25	61
Beef	-14	48	Calv Diff %	0.19	61
Health	-1	47	Calv Int (days)	1.84	51
Maintenance	22	44	Surv %	-8.56	44
				5.38	41

Dams production						
Parity	Milk (kg)	Fat (kg)	Protein (kg)	Fat (%)	Protein (%)	Days
1	4476	217	166	4.85	3.71	305
2	6478	268	247	4.14	3.81	305

- One of the highest EBI bulls on offer for 2015 @ €318.
- Excellent Protein of 0.19%.
- Fat 0.25%.
- High Fertility of €171.
- Positive milk kgs.
- Dam produced 6478kgs Milk @ 3.81% Protein (505kgs of solids) in her 2nd lactation.
- Outstanding fertility family.
- Dam and Grand dam have an average calving interval of 346 days over 8 lactations!

Fortfergus Meteor Bud S1552

SRM



HB No: IE131358040797
DOB: 19.02.2012

Breeder: Thomas Garry, Clare.
% Ho: HO 56% FR 41%
Ped: WGM x WLI x WAU

Pedigree

Sire: Woodcote GR Meteor-ET
Dam: Fortfergus WLI Aero
MGS: Whinlea Eminence Ellis

ICBF Interbull Conversions 12/14			Milk Sub Index		PTA	Rel%
Index	Euro	Rel %	Milk kg			
EBI	256	54	Fat kg	19	63	63
Milk	106	63	Prot kg	16	63	63
Fertility	113	45	Fat %	0.20	63	63
Calving	45	85	Prot %	0.17	63	63
Beef	-32	47	Calv Diff %	1.30	87	87
Health	-8	48	Calv Int (days)	-4.30	46	46
Maintenance	28	44	Surv %	4.98	43	43

Parity	Dams production					
	Milk (kg)	Fat (kg)	Protein (kg)	Fat (%)	Protein (%)	Days
1	6114	239	225	3.91	3.69	269
2	7341	289	271	3.94	3.69	292
3	6638	256	246	3.86	3.70	278
4	6639	259	240	3.91	3.61	214
5	5377	199	189	3.70	3.52	238

- One of the top bulls available for EBI @ €256.
- Milk Sub Index of €106.
- High Fertility of €113.
- Excellent Milk of +210kgs.
- Protein of +0.17%.
- Fat of +0.20%.
- Dam has produced 32,109kgs of milk @ 3.65% protein in her first 5 lactations!
- A very consistent seller.
- Suitable for use on maiden heifers.

Ballybride Atlanta

High EBI Holstein Friesian



HB No: IE151623442875
DOB: 11.02.2014

Breeder: William O'Leary, Cork
% Ho: HO 72% FR 28%
Ped: PBM x LRZ x BWZ

Pedigree

Sire: Ballinaborta Primo
Dam: IE15162349442
MGS: Laurel

ICBF Interbull Conversions 12/14			Milk Sub Index		PTA	Rel%
Index	Euro	Rel %	Milk kg	Fat kg		
EBI	315	40	335	16	335	51
Milk	100	51	17	17	17	51
Fertility	152	34	0.06	0.06	0.06	51
Calving	41	45	0.11	0.11	0.11	51
Beef	-5	38	0.81	0.81	0.81	48
Health	2	37	-7.91	-7.91	-7.91	35
Maintenance	18	35	4.48	4.48	4.48	31

Granddam production

Parity	Milk (kg)	Fat (%)	Protein (%)	Days
1	4580	4.56	3.69	268
2	6763	4.33	3.72	299
3	7189	4.20	3.47	276
4	6923	4.39	3.58	285
5	6670	4.20	3.70	273

- PBM son out of an excellent cow family.
- Massive milk of 335 kgs combined with 33kgs of solids.
- Milk sub index of over €100.
- High fertility sire.

Ballybride Houston

High EBI Holstein Friesian



HB No: IE151623472928
DOB: 20.02.2014

Breeder: William O'Leary, Cork
% Ho: HO 69% FR 25%.
Ped: AKZ x BYJ x WPE

Pedigree

Sire: Arkan GH Horizon
Dam: IE151623432230
MGS: Ballydehob Justice

ICBF Interbull Conversions 12/14			Milk Sub Index		PTA	Rel%
Index	Euro	Rel %	Milk kg	Fat kg		
EBI	294	42	207	19	207	55
Milk	111	55	17	17	17	55
Fertility	143	37	0.20	0.20	0.20	55
Calving	42	44	0.18	0.18	0.18	55
Beef	-26	33	1.06	1.06	1.06	49
Health	-3	39	-7.04	-7.04	-7.04	39
Maintenance	23	36	4.28	4.28	4.28	34

Dams production

Parity	Milk (kg)	Fat (%)	Protein (%)	Days
1	4510	4.92	3.88	282

- Very balanced son of AKZ.
- +207kgs of milk combined with 0.18% protein and 0.20% fat.
- 36kgs of milk solids.
- Massive milk sub index of €111.
- High fertility sire.

Moneen Miami

High EBI Holstein Friesian



HB No: IE141556292118
DOB: 02.02.2014

Breeder: Shane Chambers, Cork
% Ho: HO 69% FR 31%
Ped: WLY x DWA x LLO

Pedigree

Sire: Imleach Lucky Whistler
Dam: IE141556221749
MGS: Derrinsallow Cait 794 Adam

ICBF Interbull Conversions 12/14			Milk Sub Index		PTA	Rel%
Index	Euro	Rel %	Milk kg	Fat kg	Prot kg	
EBI	346	34	15	24	10	45
Milk	88	45	24	10	45	45
Fertility	199	26	0.44	0.18	1.34	45
Calving	38	40	0.18	0.43	-10.99	27
Beef	-8	30	1.34	43		
Health	4	30	Calv Int (days)	-10.99	27	
Maintenance	21	28	Surv %	5.21	23	

Parity	Dams production					
	Milk (kg)	Fat (kg)	Protein (kg)	Fat (%)	Protein (%)	Days
1	4012	203	160	5.05	3.99	250
2	5264	277	209	5.25	3.97	271

- High EBI sire of €346.
- One of the top bulls to improve fertility.
- Outstanding Fertility figure of €199.
- Massive components of 0.44% fat and 0.18% protein.
- Huge milk solids of 34kgs.
- Dam's protein to a high of 3.99%.

Ballybride Boston

High EBI Holstein Friesian



HB No: IE151623482904
DOB: 16.02.2014

Breeder: William O Leary, Cork
% Ho: HO 75% FR 25%
Ped: WLY x BYJ x HFL

Pedigree

Sire: Imleach Lucky Whistler
Dam: Ballybride BYJ Shelley
MGS: Ballydehob Justice

ICBF Interbull Conversions 12/14			Milk Sub Index		PTA	Rel%
Index	Euro	Rel %	Milk kg	Fat kg	Prot kg	
EBI	360	38	-22	18	10	50
Milk	89	50	18	10	50	50
Fertility	194	31	0.36	0.22	1.10	50
Calving	46	43	0.22	0.46	-11.08	32
Beef	-7	35	1.10	46		
Health	4	36	Calv Int (days)	-11.08	32	
Maintenance	32	33	Surv %	4.65	29	

Parity	Dams production			
	Milk (kg)	Fat (%)	Protein (%)	Days
1	4909	4.73	3.78	274
2	5482	4.52	3.74	288

- One of the highest EBI bulls on offer for 2015.
- Huge fertility of €194.
- High components.
- WLY son.

Ballybride Darwin S2145

Dam: Ballybride HZO Anna



HB No: IE151623412765
DOB: 14.03.2013

Breeder: William O'Leary, Cork.
% Ho: HO 72% FR 25% JE 3%
Ped: LLK x HZO x UYC

Pedigree

Sire: Lauragh Lance
Dam: Ballybride HZO Anna
MGS: Hazael Eminence Dano

ICBF Interbull Conversions 12/14			Milk Sub Index		PTA	Rel%
Index	Euro	Rel %	Milk kg	Fat kg		
EBI	270	51	Milk kg	19	138	63
Milk	86	63	Fat kg	12	63	63
Fertility	165	44	Prot kg	0.25	63	63
Calving	22	52	Fat %	0.14	63	63
Beef	-7	48	Prot %	3.24	54	54
Health	-1	49	Calv Diff %	-9.18	45	45
Maintenance	8	45	Calv Int (days)	4.24	41	41
			Surv %			

Dams production

Parity	Milk (kg)	Fat (kg)	Protein (kg)	Fat (%)	Protein (%)	Days
1	5415	231	199	4.27	3.67	297
2	6202	303	234	4.88	3.78	318
3	6646	301	240	4.53	3.61	270
4	6235	270	228	4.34	3.66	266
5	7345	319	268	4.35	3.65	296
6	6475	296	231	4.58	3.56	259
7	5601	239	202	4.27	3.60	229

- High Fertility sire.
- Excellent milk and 31kgs of solids!
- Dams production to 7345kgs of Milk @ 3.78% Protein.
- Excellent fat and protein.
- Top pedigree.

Heathfield Sydney S2115

XSR

Dam: Cloonrook Heather Barry 2



HB No: IE241483376078
DOB: 05.02.2013

Breeder: Niall O'Callaghan, Limerick
% Ho: HO 59% FR 41%
Ped: PCG x Killingley Russellino Barry x Killingley Lucky Ambience

Pedigree

Sire: Cashins VA Campaigner S1F
Dam: Cloonrook Heather Barry 2
MGS: Killingley Russellino Barry

ICBF Interbull Conversions 12/14			Milk Sub Index		PTA	Rel%
Index	Euro	Rel %	Milk kg	Fat kg		
EBI	297	41	Milk kg	17	-15	54
Milk	87	54	Fat kg	10	17	54
Fertility	176	34	Prot kg	0.34	10	54
Calving	28	45	Fat %	0.21	0.34	54
Beef	-17	40	Prot %	2.01	0.21	54
Health	-4	35	Calv Diff %	-10.12	2.01	49
Maintenance	24	37	Calv Int (days)	4.19	-10.12	36
			Surv %		4.19	31

Dams production

Parity	Milk (kg)	Fat (kg)	Protein (kg)	Fat (%)	Protein (%)	Days
1	4221	219	173	5.19	4.10	305

- Dam produced up to 4.10% Protein and 5.19% Fat.
- Outcross pedigree.
- High Fertility and high solids.

Ballybride Melbourne S2117

High EBI Holstein Friesian



HB No: IE151623462670
DOB: 15.02.2013

Breeder: William O'Leary, Cork
% Ho: HO 84% FR 16%
Ped: KOZ x BZR x WPE

Pedigree

Sire: Kevinsfort OJI Haze
Dam: Ballybride BZR Paula
MGS: Ballybride Dano

ICBF Interbull Conversions 12/14			Milk Sub Index		PTA	Rel%
Index	Euro	Rel %	Milk kg	Fat kg		
EBI	296	55	Fat kg	20	259	65
Milk	98	65	Prot kg	15	20	65
Fertility	133	50	Fat %	0.18	15	65
Calving	54	55	Prot %	0.13	0.18	65
Beef	-13	52	Calv Diff %	1.50	0.13	65
Health	4	53	Calv Int (days)	-6.99	1.50	57
Maintenance	14	50	Surv %	3.80	-6.99	51
					3.80	49

Granddams production

Parity	Milk (kg)	Fat (kg)	Protein (kg)	Fat (%)	Protein (%)	Days
1	5419	241	206	4.45	3.80	286

- Exceptional well balanced EBI bull for production and fertility.
- +259kgs Milk and high components from this high EBI sire.
- Grandam production exceptional.
- 5419kgs Milk @ 3.80% Protein.
- Production index of €98.
- High Fertility €133.
- Massive milk solids of 35kgs.
- Powerful big black bull.

Ballybride London S1568 SRM

High EBI Holstein Friesian



HB No: IE 151623492475
DOB: 16.02.2012

Breeder: William O'Leary, Cork
% Ho: HO 63% FR 37%
Ped: IRP x LYE x KVB

Pedigree

Sire: Midlands Prince
Dam: Ballybride Viola
MGS: Lloyds Excellency

ICBF Interbull Conversions 12/14			Milk Sub Index		PTA	Rel%
Index	Euro	Rel %	Milk kg	Fat kg		
EBI	283	56	Fat kg	9	178	63
Milk	61	63	Prot kg	10	9	63
Fertility	179	47	Fat %	0.03	10	63
Calving	45	83	Prot %	0.09	0.03	63
Beef	-17	50	Calv Diff %	1.00	0.09	63
Health	1	50	Calv Int (days)	-11.00	1.00	84
Maintenance	13	49	Surv %	3.50	-11.00	48
					3.50	45

Dams production

Parity	Milk (kg)	Fat (kg)	Fat (%)	Protein (kg)	Protein (%)	Days
1	5273	189	186	3.59	3.53	269
2	6469	258	229	3.99	3.54	288
3	7252	295	268	4.06	3.70	308
4	6274	246	219	3.92	3.50	258
5	6646	262	243	3.94	3.66	295
6	7106	286	254	4.02	3.58	296
7	5912	258	213	4.37	3.61	291
8	7222	321	260	4.44	3.60	322
9	4469	179	160	4.01	3.58	234
10	5393	228	195	4.22	3.61	291

- Dam completed 10 lactations with a 365 day calving interval.
- Protein to 0.09%.
- Huge Fertility of €179.
- Excellent components and +178kgs for Milk.
- Increased his EBI since last year.
- Suitable for use on heifers

Beesimon Lamont S2123

SRM

High EBI Holstein Friesian



HB No: IE151617254307

DOB: 25.02.2013

Breeder: Noel Beecher, Cork.

% Ho: HO 56% FR 37% JE 6%

Ped: MSF x HZO x UYC

Pedigree

Sire: Morris TF Lamont

Dam: Beesimon HZO Avaleen

MGS: Hazael Eminence Dano

ICBF Interbull Conversions 12/14			Milk Sub Index		PTA	Rel%
Index	Euro	Rel %	Milk kg	Fat kg		
EBI	318	49	Milk kg	17	277	63
Milk	130	63	Fat kg	21	17	63
Fertility	145	43	Prot kg	0.12	21	63
Calving	30	53	Fat %	0.21	0.12	63
Beef	-21	44	Prot %	1.59	0.21	63
Health	-2	44	Calv Diff %	-8.56	1.59	56
Maintenance	28	43	Calv Int (days)	3.24	-8.56	44
			Surv %		3.24	40

Dams production

Parity	Milk (kg)	Fat (kg)	Protein (kg)	Fat (%)	Protein (%)	Days
1	5549	208	206	3.75	3.71	277
2	7427	281	277	3.79	3.72	262
3	7150	289	271	4.04	3.79	292
4	8262	296	327	3.58	3.96	318
5	8466	265	326	3.13	3.85	298
6	7786	254	299	3.26	3.84	282
7	6928	237	257	3.42	3.71	249
8	6249	218	226	3.48	3.61	209

- EBI €318.
- Excellent Production Index.
- +277kgs Milk @ 0.21% Protein.
- Dam has produced over 57,871kgs of Milk in 8 lactations @ 3.79% Protein.
- Protein to a high of 3.95%!
- Very high milk SI of €130.
- Fertility of €145.
- Outcross pedigree.
- Low set NZ type bull.

Velvetstown Madrid S1553

SRM

High EBI Holstein Friesian



HB No: IE151379914227

DOB: 14.02.2011

Breeder: Alexander Crofts, Cork

% Ho: HO 65% FR 35%

Ped: SJI x HZO x CWJ

Pedigree

Sire: Sunnybank Justin

Dam: Velvetstown HZO Rosie 3262

MGS: Hazael Eminence Dano

ICBF Interbull Conversions 12/14			Milk Sub Index		PTA	Rel%
Index	Euro	Rel %	Milk kg	Fat kg		
EBI	255	52	Milk kg	3	-22	59
Milk	27	59	Fat kg	3	3	59
Fertility	189	43	Prot kgs	0.08	3	59
Calving	36	78	Fat %	0.08	0.08	59
Beef	-7	48	Prot %	1.30	0.08	59
Health	1	47	Calv Diff %	-10.92	1.30	76
Maintenance	6	42	Calv Int (days)	4.40	-10.92	44
			Surv %		4.40	41

Dams production

Parity	Milk (kg)	Fat (kg)	Protein (kg)	Fat (%)	Protein (%)	Days
1	3619	152	127	4.21	3.51	305
2	5237	167	174	3.19	3.33	305
3	11962	386	396	3.23	3.31	305
4	7680	235	250	3.05	3.26	305

- Massive Fertility of €189.
- Excellent components.
- Interesting pedigree SJI x HZO x CJW.
- Dam has produced over 26,000kgs of Milk in 4 lactations.

Velvetstown Berlin S1566 SRM

HB No: IE151379994779 DOB: 20.02.2012

Breeder: Alexander Crofts, Cork.

% Ho: HO 78% FR 22%

Ped: LLK x KNW x ELC

Pedigree

Sire: (IG) Lauragh Lance

Dam: Velvetstown Tulip 3239

MGS: Kiernans Norwester

ICBF Interbull Conversions 12/14			Milk Sub Index		PTA	Rel%
Index	Euro	Rel %	Milk kg			
EBI	239	54	Fat kg	-74	63	
Milk	67	63	Prot kgs	6	63	
Fertility	154	45	Fat %	0.38	63	
Calving	29	81	Prot %	0.18	63	
Beef	-13	50	Calv Diff %	2.00	82	
Health	-2	49	Calv Int (days)	-8.22	46	
Maintenance	9	46	Surv %	4.28	42	

Dams production

Parity	Milk (kg)	Fat (kg)	Protein (kg)	Fat (%)	Protein (%)	Days
1	4871	209	172	4.30	3.54	305
2	4975	212	177	4.26	3.55	305
3	13409	510	496	3.80	3.70	305
4	8298	345	302	4.16	3.63	305

- Outcross sire for Ireland.
- Dam has produced over 29,000kgs of milk @ 3.6% Protein over 4 lactations.
- Just look at his components;
- 0.38% Fat, 0.18% Protein.
- +23kgs of solids.

Velvetstown Vegas

HB No: IE151379915472 DOB: 18.02.2014

Breeder: Alexander Crofts, Cork

% Ho: HO41% FR 19% JE 38% UN 3.00%

Ped: WLY x PWC x PWC

Pedigree

Sire: Imleach Lucky Whistler

Dam: IE151379971808

MGS: Parkwood Casper

ICBF Interbull Conversions 12/14			Milk Sub Index		PTA	Rel%
Index	Euro	Rel %	Milk kg			
EBI	307	28	Fat kg	-1	34	
Milk	76	34	Prot kg	17	34	
Fertility	189	21	Prot kg	9	34	
Calving	26	42	Fat %	0.33	34	
Beef	-34	26	Prot %	0.18	34	
Health	4	20	Calv Diff %	2.60	39	
Maintenance	41	22	Calv Int (days)	-10.44	22	
			Surv %	4.92	18	

Dams production

Parity	Milk (kg)	Fat (%)	Protein (%)	Days
1	4575	4.74	3.64	305
2	5420	4.55	3.89	266
3	6750	4.93	3.80	267
4	6695	4.96	3.85	305
5	4707	4.76	3.81	305
6	6163	4.79	3.88	300
7	6648	4.54	3.83	296
8	11995	3.83	3.96	305
9	5647	4.84	4.11	246
10	3731	4.97	3.94	282

- Crossbred bull

Moorepark Dublin S2055

HB No: IE151549247279 DOB: 18.02.2012

Breeder: Moorepark, Cork.

% Ho: 100% Jersey

Ped: TIO x PWC x GJA

Pedigree

Sire: Tironui OM Joskin

Dam: Ballyhooly Casper Ella

MGS: Parkwood Casper

ICBF Interbull Conversions 12/14			Milk Sub Index		PTA	Rel%
Index	Euro	Rel %	Milk kg			
EBI	185	40	Fat kg	-254	43	
Milk	73	43	Fat kg	18	43	
Fertility	74	33	Prot kgs	5	43	
Calving	31	65	Fat %	0.59	43	
Beef	-57	33	Prot %	0.28	43	
Health	-3	33	Calv Diff %	0.50	66	
Maintenance	58	33	Calv Int (days)	-3.50	34	
			Surv %	2.56	32	

- Pure Jersey with outstanding components.
- Balanced EBI
- Milk €74
- Fertility €74.
- Has all the great NZ Jersey sires in his pedigree; TIO, OKU, PWC etc..

Ballinaborta Perth Xbred S2179

HB No: IE151021712711 DOB: 05.02.2013

Breeder: Pat Tatton.

% Ho: HO 44% FR 25% JE 31%

Ped: SPD x HZO x HNN

Pedigree

Sire: St Peters Obsidian

Dam: Ballinaborta HZO Mary

MGS: Hazael Eminence Dano

ICBF Interbull Conversions 12/14			Milk Sub Index		PTA	Rel%
Index	Euro	Rel %	Milk kg			
EBI	249	28	Fat kg	22	34	
Milk	60	34	Fat kg	10	34	
Fertility	150	21	Prot kg	8	34	
Calving	35	42	Fat %	0.18	34	
Beef	-26	27	Prot %	0.15	34	
Health	-3	22	Calv Diff %	1.70	38	
Maintenance	25	24	Calv Int (days)	-9.10	23	
			Surv %	3.11	17	

Dams production

Parity	Milk (kg)	Fat (kg)	Protein (kg)	Fat (%)	Protein (%)	Days
1	4725	198	168	4.20	3.56	305
2	5600	234	208	4.18	3.71	305
3	5788	250	217	4.33	3.75	305
4	6226	255	210	4.10	3.37	305
5	5594	225	207	4.01	3.70	305
6	6158	232	223	3.77	3.62	305
7	6789	245	244	3.61	3.59	305

- Kiwi Crossbred Sire.
- Dam has produced up to 3.74% Protein and 7026kgs of Milk.
- Perth has excellent components.
- From the same herd as PBM
- High Fertility of €150
- Positive for milk kgs and milk sub index.

Blackisle Glenfinnan ET EX90 GZF

British Friesian



HB No: UK5019955601784 100% British Friesian D.O.B. 21.10.2006

Pedigree

Sire: Marshside Rocket 3 ET

Dam: Blackisle Bertha 5 ET BFE 90

MGS: Gornal Pegasus

MGD: Hunday Bertha 25 ET BFV 86

ICBF Interbull Conversions 12/14			Milk Sub Index			PTA	Rel%
Index	Euro	Rel %	Milk kg	Fat kg	Prot kg		
EBI	155	88	Fat kg	3	-6	-268	98
Milk	-9	98	Prot kg	0.28	0.07	3	98
Fertility	117	75	Fat %	1.50	-7.36	-6	98
Calving	48	98	Prot %	2.10	75	0.28	98
Beef	-17	98	Calv Diff %	4.23	99	1.50	98
Health	8	86	Calv Int (days)	2.07	74	-7.36	98
Maintenance	7	83	Surv %			2.10	98



Hunday Bertha 25 ET (grandam of Glenfinnan, Ardbeg and Tormore and also dam of BCG)

UK British Friesian Production Proof 12/14

Milk kgs	Fat kgs	Prot kgs	Fat %	Prot %	Rel %	PLI £	Dtrs(UK)	Hds(UK)	Type
-270	4.4	-4.9	0.22	0.06	90	102	40	12	2.07

Irish Daughter Production

Parity	Milk (kg)	Fat (kg)	Protein (kg)	Fat (%)	Protein (%)
1	4960	210	173	4.23	3.49
2	5769	241	204	4.18	3.54
3	6230	262	220	4.21	3.53
4	6651	273	238	4.10	3.58

- High EBI proven British Friesian
- Sired by the noted Marshside Rocket 3
- Blackisle Bertha 5 ET EX is a full sister to BCG
- Dam is a regular breeder having her 1st calf at 2 yrs 2 mths and her 7th at 8yrs 2 mths
- Bertha 5 has produced 3 EX sons – Ardbeg, Tormore and Glenfinnan
- Glenfinnan comes from 6 generations either EX/VG
- Outstanding fertility €117
- Excellent satisfaction with milking daughters.
- GZF daughters have outstanding production, are easily managed and have good temperament.
- One of Bova's top selling British Friesians.

Blackisle Bertha 5 ET EX

Lact	305M	F%	P%	F+P	Days	Age
1	6644	4.39	3.55	528	305	2,2
2	6700	4.44	3.61	539	305	3,2
3	7337	4.14	3.60	568	292	4,3
4	6484	4.03	3.49	487	276	5,2
5	7337	4.29	3.55	575	305	6,3
6	8194	4.33	3.59	649	305	7,2
7	6611	4.19	3.47	506	272	8,2
8	8282	4.28	3.30	625	305	9,5

Gortfadda Stephens Storm

British Friesian



Dam: Gortfadda Molly 87 EX93

HB No: IE241434521397 100% British Friesian D.O.B: 26.12.2013
 Pedigree
Sire: Barrowvale Martell 12
Dam: Gortfadda Molly 87 EX93
MGS: Grove Breadwinner
MGD: Gortfadda Molly 56 EX90

ICBF Interbull Conversions 12/14			Milk Sub Index		PTA	Rel%
Index	Euro	Rel %	Milk kg	Fat kg		
EBI	204	48	Fat kg	6	-105	57
Milk	22	57	Prot kg	1	57	57
Fertility	148	43	Fat %	0.20	57	57
Calving	28	49	Prot %	0.09	57	57
Beef	-8	47	Calv Diff %	3.12	50	50
Health	2	44	Calv Int (days)	-9.85	44	44
Maintenance	11	41	Surv %	2.16	42	42

Dams production

Parity	Milk (kg)	Fat (kg)	Fat (%)	Protein (kg)	Protein (%)	Days
1	4723	208	169	4.40	3.57	252
2	5813	246	211	4.23	3.63	292
3	7839	371	297	4.73	3.79	320
4	9145	406	342	4.44	3.74	312
5	6800	295	249	4.34	3.66	275
6	8174	344	280	4.21	3.43	306
7	8057	353	302	4.38	3.74	323

- Storm is out of one of the best dams in the country, Gortfadda Molly 87 EX93.
- She has already produced an EX93 herd sire in the Churchclara herd.
- Molly has produced up to 9,145kgs of milk, 748kgs of milk solids @ 3.74% protein in 312 days!
- Storm has one of the highest EBI's for a British Friesian in 2015.
- Grove Breadwinner and Catlane Corsair in his bloodlines.
- High components and a must for your breeding season in 2015.
- High fertility, very correct, upstanding bull.

Churchclara Maurauder

British Friesian



Churchclara Blackie Circus EX90

HB No: IE 211346882855 92% British Friesian D.O.B: 17.2.2014
 Pedigree
Sire: Barrowvale Martell 12
Dam: Churchclara Nautical Circus EX91
MGS: Burfen Nautical
MGD: Churchclara Boss Circus

ICBF Interbull Conversions 12/14			Milk Sub Index		PTA	Rel%
Index	Euro	Rel %	Milk kg	Fat kg		
EBI	212	45	Fat kg	4	-341	56
Milk	22	56	Prot kg	-2	56	56
Fertility	162	39	Fat %	0.33	56	56
Calving	27	46	Prot %	0.20	56	56
Beef	-7	42	Calv Diff %	1.63	45	45
Health	0	43	Calv Int (days)	-9.96	40	40
Maintenance	12	38	Surv %	3.15	38	38

Dams production

Parity	Milk (kg)	Fat (kg)	Fat (%)	Protein (kg)	Protein (%)	Days
1	4327	188	162	4.34	3.74	307
2	6012	272	224	4.52	3.72	317
3	5669	280	224	4.94	3.95	318
4	6746	300	246	4.44	3.64	315
5	7439	355	286	4.77	3.84	296

- Maurauder is out of the EX91 Churchclara Nautical Circus.
- Circus has produced protein to 3.95% and milk to 7,439 in only 296 days!
- Circus produced 641kgs of milk solids in 2014.
- The Circus family has consistently low cell count and are very easily managed.
- Maurauder is one of the top EBI Friesians on offer for 2015.
- Huge fertility of €162.
- Very high components.
- 0.20% protein and 0.33% fat.
- Dairy in type.

Coolmohan Rebcheddar EX90 ^{RRB}

British Friesian



HB No: IE151548550985 94% British Friesian D.O.B. 13.01.2009

Pedigree

Sire: Catlane Cheddar

Dam: Coolmohan Rebecca Image 1 EX92

MGS: Ballykennedy Lysell Image ET

MGD: Coolmohan Rebecca 3 EX90

- Redcheddar comes from a high protein producing proven cow family.
- Dam has produced 56,636kgs of milk with an average protein of 4.01% and fat of 4.75% over 8 lactations.
- Rebcheddar has very good type.
- Rebcheddar has Protein of 0.11% and Fat of 0.20%.
- Extremely high Fertility of €119.
- Previous herd sire in the Churchclara herd in Kilkenny.
- 90% black in colour.
- His milking daughters have enormous production.
- 1st lactation average of 5015kgs milk @ 3.51% protein and 4.17% fat.

ICBF Interbull Conversions 12/14			Milk Sub Index		
Index	Euro	Rel %	PTA	Rel%	
EBI	150	69	Milk kgs	-224	87
Milk	5	87	Fat kgs	1	87
Fertility	119	45	Prot kgs	-3	87
Calving	22	92	Fat %	0.20	87
Beef	9	90	Prot %	0.11	87
Health	-10	61	Calv Diff %	4.70	96
Maintenance	3	63	Calv Int (days)	-7.16	45
			Surv %	2.48	44

Irish Daughter Production					
Parity	Milk (kg)	Fat (kg)	Protein (kg)	Fat (%)	Protein (%)
1	5015	209	176	4.17	3.51
2	6116	261	226	4.27	3.70

Coolmohan Rebecca Image 1 EX92						
Lact	Days	Milk kgs	F Kgs	Ptn Kgs	Fat %	Ptn %
1	316	5914	261	224	4.42	3.79
2	318	6567	309	279	4.71	4.26
3	310	7692	357	326	4.64	4.24
4	329	7656	340	319	4.44	4.16
5	297	8021	464	320	5.78	3.99
6	293	7292	295	287	4.05	3.93
7	305	7139	326	293	4.57	4.11
8	305	7071	380	265	5.37	3.74

Blackisle Matrix ET TIX

British Friesian



HB No: UK501995701904 99.2% British Friesian D.O.B. 04.04.2007
 Pedigree
Sire: Marshide Rocket 3rd ET
Dam: Blackisle Laura 19 BFE92 (2)
MGS: Failand Breadwin
MGD: Blackisle Laura 9 BFV85

ICBF Interbull Conversions 12/14			Milk Sub Index		PTA	Rel%
Index	Euro	Rel %	Milk kgs	Fat kgs	Prot kgs	Fat %
EBI	57	82	-438	-13	95	95
Milk	-70	95	-15	0.10	95	95
Fertility	95	65	0.00	1.80	97	95
Calving	38	95	-6.94	0.75	65	95
Beef	-21	96				
Health	2	76				
Maintenance	18	81				

UK British Friesian Production Proof 12/14								
Milk kgs	Fat kgs	Prot kgs	Fat %	Prot %	Rel %	PLI £	Dtrs(UK)	Hds(UK)
-424	-11	-13.9	0.1	0.01	66	-175	0	0
								2.11

Irish Daughter Production

Parity	Milk (kg)	Fat (kg)	Protein (kg)	Fat (%)	Protein (%)
1	4667	194	160	4.16	3.43
2	5598	220	190	3.93	3.39
3	6238	249	211	3.99	3.38
4	6239	256	212	4.10	3.40

His dam, Laura 19 EX, has tremendous production and was one of the top cows at the recently dispersed Blackisle herd. She has produced 2 BFE daughters Laura 27 and Laura 45, who are both top producing cows. Rocket 3 is recognised as a production and type specialist.

- Bova's number 1 sire for use on dairy heifers.
- Outstanding Fertility of €95.
- Easy calving, suitable for maiden heifers
- Huge milk volume in 2nd lactation combined with excellent solids.

Blackisle Laura 19 BFE92 (2)

Lact	305M	F%	P%	F+P	Days	Age
1	7075	4.21	3.40	539	305	2,7
2	9124	4.29	3.44	706	305	3,7
3	10083	4.38	3.49	794	305	4,9
4	8510	3.94	3.33	619	305	8,7
5	9298	5.02	3.41	793	305	8,7

Lakemead Appeal AKE

British Friesian



HB No: UK322325402557 99% British Friesian D.O.B.14.11.2011
 Pedigree
Sire: Lakemead Prancer
Dam: Lakemead April 4 BFE 90 (2)
MGS: Catlane Corsair
MGD: Lakemead April 3 BFE 91 (4)

ICBF Interbull Conversions 12/14			Milk Sub Index		PTA	Rel%
Index	Euro	Rel %	Milk kg	Fat kg	Prot kgs	Fat %
EBI	159	30	-121	-1	30	30
Milk	0	30	-2	0.08	30	30
Fertility	127	24	0.06	2.00	71	30
Calving	29	69	-7.88	2.43	23	30
Beef	-15	26				
Health	1	25				
Maintenance	16	24				

UK British Friesian Production Proof 12/14							
Milk kgs	Fat kgs	Prot kgs	Fat %	Prot %	Rel %	PLI £	
-139	1.5	0.3	0.1	0.08	42	219	

- Appeal comes from the outstanding April cow family at Lakemead.
- April 4 has produced up to 2000glns of milk and up to 3.93% Protein!
- She has produced over 55,000 litres of milk to date!
- The Lakemead herd has operated organically for the last 5 years.
- Appeal is a structurally correct, stylish outcross Friesian bull.
- His pedigree includes Patterton Perfection and Catlane Corsair.
- Prancer has 790 daughters milking in the UK.

His Dam LAKEMEAD APRIL 4 BFE 90 (2)

Lact.	Milk	Days	Fat kg	Ptn kg	Fat%	Ptn%
1	6577	305	308	250	4.69	3.79
2	7408	297	384	291	5.18	3.93
3	8276	305	429	327	5.18	3.95
4	8711	303	426	306	4.88	3.51
5	8557	288	349	296	4.08	3.46
6	6624	305	290	244	4.37	3.69
7	9542	305	416	318	4.36	3.33

Lakemead Marshall EX90 LKW

British Friesian



HB No: UK322325301828 92% British Friesian D.O.B. 14.08.2008
Pedigree

Sire: Winnoch Officer
Dam: Lakemead Melody 13 BFE92 (5)
MGS: Burgate Benedict
MGD: Lakemead Melody 7 BFV86

ICBF Interbull Conversions 12/14			Milk Sub Index			PTA	Rel%
Index	Euro	Rel %	Milk kgs	Fat kgs	Prot kgs		
EBI	106	62	Fat kgs	-1		-250	85
Milk	-15	85	Prot kgs	-6			85
Fertility	90	34	Fat %			0.18	85
Calving	24	86	Prot %			0.06	85
Beef	-15	86	Calv Diff %			2.40	91
Health	7	53	Calv Int (days)			-6.58	36
Maintenance	15	44	Surv %			0.69	31

Irish Daughter Production

Parity	Milk (kg)	Fat (kg)	Protein (kg)	Fat (%)	Protein (%)
1	4800	201	168	4.19	3.50
2	4936	209	178	4.23	3.61

UK British Friesian Production Proof 12/13

Milk kgs	Fat kgs	Prot kgs	Fat %	Prot %	Rel %	PLI £	Type
9	4.2	3.4	0.06	0.05	86	92	1.4

Lakemead Melody 13 BFE92 (5)

Lact	Milk kgs	Days	Fat kgs	Ptn kgs	Fat %	Ptn %
1	6166	278	244	214	3.96	3.48
2	8927	305	352	317	3.94	3.55
3	9291	304	362	324	3.89	3.49
4	9950	296	428	335	4.30	3.37
5	10183	293	484	341	4.75	3.35
6	11244	305	508	367	4.52	3.26
7	10337	305	496	359	4.80	3.47
8	11128	305	487	343	4.38	3.09
9	9654	305	364	293	3.78	3.03
10	9785	305	367	269	3.75	3.04

- One of the highest young bulls available in the UK ranked on PLI.
- His dam, Melody 13, is a regular breeder having completed 10 lactations.
- Melody 13 is classified EX92.
- Melody 13 is a huge production cow producing a high of 11,244kg Milk in 305 days!
- She has already produced 2 EX daughters.
- Marshall has excellent Type.
- Excellent satisfaction with progeny.
- First milking daughters have good strength and components.

Blackisle Benlmond EX90 KON

British Friesian



HB No: UK0625071 98% British Friesian D.O.B. 24.08.2004
Pedigree

Sire: Parbury Venue EX
Dam: Blackisle Laura 21 BFE 90
MGS: Blackisle Glen Albyn ET EX
MGD: Blackisle Laura 5 BFE 92

ICBF Interbull Conversions 12/14			Milk Sub Index			PTA	Rel%
Index	Euro	Rel %	Milk kgs	Fat kgs	Prot kgs		
EBI	75	84	Fat kgs	-8		-257	96
Milk	-48	96	Prot kgs	-10			96
Fertility	101	70	Fat %			0.04	96
Calving	27	92	Prot %			-0.02	96
Beef	-15	95	Calv Diff %			3.60	94
Health	12	75	Calv Int (days)			-6.75	70
Maintenance	5	84	Surv %			1.40	70

UK British Friesian Production Proof 12/14

Milk kgs	Fat kg	Prot kg	Fat %	Prot %	Rel %	PLI £	Dtrs(UK)	Hds(UK)	Type
-5	2.6	-0.4	0.05	0.01	98	66	302	70	1.64

Irish Daughter Production

Parity	Milk (kg)	Fat (kg)	Protein (kg)	Fat (%)	Protein (%)
1	5050	201	170	3.98	3.37
2	5691	223	196	3.92	3.44
3	6210	241	212	3.88	3.41
4	6519	249	222	3.82	3.41
5	6440	260	219	4.04	3.40

Blackisle Laura 21 BFE 90

Lact	Milk	Days	Fat Kgs	Ptn Kgs	Fat %	Ptn %
1	7673	305	328	259	4.27	3.37
2	8617	305	356	299	4.13	3.47
3	9239	305	367	308	3.98	3.33
4	8561	305	325	279	3.80	3.26
5	10054	305	406	319	4.03	3.27

Benlmond by Parbury Venue is out of one of A. Mann's best cows -Laura 21 - from the great Laura family. Laura 21 is sired by the excellent Blackisle Glenalbyn (BCG) (EBI €180) and she has already produced 2 VG + 1EX daughter for the Blackisle Herd. Just look at Laura 21's production. Maternal brother Blackisle Majestic (BF 88) sold for the top British Friesian price of £2,500 at the 17th annual bull sale in Carlisle 2005. Parbury Venue's milking heifers in the Blackisle herd are excellent lookers and producers. Improves SCC. Benlmond daughters are powerful, robust cows with good production and are very fertile. Outstanding Fertility of €101.

Blackisle Cardow VG89 KCW

British Friesian



HB No: UK0611080 100% British Friesian D.O.B. 16.11.2004

Pedigree

Sire: Parbury Venue EX
Dam: Blackisle Mist 25 BFE 92 (2)
MGS: Blackisle Glen Albyn ET EX
MGD: Blackisle Mist 14 BFE 92

ICBF Interbull Conversions 12/14			Milk Sub Index		PTA	Rel%
Index	Euro	Rel %	Milk kgs	Fat kgs	Prot kgs	Prot %
EBI	33	85	-275	-12	-9	96
Milk	-47	96				96
Fertility	80	72		-0.03		96
Calving	2	93		0.00		96
Beef	-19	95		4.70		94
Health	13	75		-6		72
Maintenance	7	87		0.42		72

UK British Friesian Production Proof 12/13

Milk kgs	Fat kg	Prot kg	Fat %	Prot %	Rel %	PLI £	Dtrs(UK)	Hds(UK)	Type
-58	-1.7	-2.1	0.02	0.01	93	54	61	12	-5

Irish Daughter Production

Parity	Milk (kg)	Fat (kg)	Protein (kg)	Fat (%)	Protein (%)
1	5004	197	170	3.94	3.40
2	5661	217	192	3.83	3.39
3	5908	230	202	3.89	3.42
4	6328	241	219	3.81	3.46
5	6539	253	225	3.87	3.44

Blackisle Mist 25 BFE 90

Lact	Milk	Days	Fat kgs	Ptn kgs	Fat %	Ptn %
1	6056	305	259	224	4.28	3.7
2	7616	281	311	273	4.09	3.58
3	8254	297	347	286	4.23	46
4	8031	305	340	286	4.23	3.56
5	9416	305	399	332	4.24	3.53
6	8312	305	437	278	5.26	3.34
7	8626	305	452	295	5.24	3.42

Cardow is out of the excellent Mist family noted for their production, protein and fat - protein to a high of 3.7%. Cardow's dam Mist 25 is by the excellent Blackisle Glenalbyn (BCG EBI €180). Mist 25 is the Dam of Mist 38 (BFE 90), Mist 62 BFE90, Mister Man BFE90 and 6 VG daughters! Cardow's full brother Royal Oak sold for the top British Friesian price of €6,200 at the 18th annual bull sale in Carlisle 2006. Excellent performance from milking daughters who are now on their 5th lactation averaging 7,039kgs. Mist 25 has produced 8 daughters classified either EX or VG, 1 EX son and 1 VG89 son. Outstanding daughter production as can be seen above. Top bull to improve milk kgs and power in your herd.

Dunum Capan 12 EX90 DUA

British Friesian



HB No: RI00614126. 94% British Friesian D.O.B.12.11.2001

Pedigree

Sire: Capan 76
Dam: Dunum Sneacta 32 EX 90
MGS: Huddlesford Doraman
MGD: Dunum Sneacta 3

ICBF Interbull Conversions 12/14			Milk Sub Index		PTA	Rel%
Index	Euro	Rel %	Milk kgs	Fat kgs	Prot kgs	Prot %
EBI	86	91	-114	-11	-5	97
Milk	-31	97				97
Fertility	98	83		-0.13		97
Calving	19	95		-0.02		97
Beef	-14	97		2.10		95
Health	-3	80		-6.35		82
Maintenance	3	93		1.55		84

UK British Friesian Production Proof 12/14

Milk kgs	Fat kg	Prot kg	Fat %	Prot %	Rel %	PLI £	Dtrs(UK)	Hds(UK)
-201	-12	-3.5	-0.04	0.05		192	116	18

Irish Daughter Production

Parity	Milk (kg)	Fat (kg)	Protein (kg)	Fat (%)	Protein (%)
1	4867	186	164	3.82	3.37
2	5798	214	197	3.69	3.40
3	6315	237	216	3.75	3.42
4	6458	241	220	3.73	3.41
5	6804	253	233	3.72	3.42

His Dam DUNUM SNEACTA 32

1	5566	3.77	3.21	305	2/1
2	5599	3.62	3.25	245	3/1
3	7579	3.71	3.26	302	4/1
4	8249	3.80	3.23	292	5/0
5	8146	3.74	3.27	303	6/0
6	7629	4.06	3.41	295	7/1
7	7743	4.12	3.32	280	8/0
8	7380	3.72	3.31	284	9/0
9	6412	3.75	3.36	305	9/11
10	6917	3.95	3.37	305	10/11
11	6826	3.71	3.22	305	
12	7011	3.86	3.34	305	
13	Finished mid-way in lactation				

- He sires, size, style, correctness and strength in his offspring.
- Superb cow family that is known for its longevity.
- Capan's Dam is EX 90 from the Dunum Herd in Limerick and finished her production in her 13th lactation
- Milking Daughters are superb with huge production & good protein.
- One of the highest ranking British Friesian bulls for milk
- Capan's daughters in their 5th lactation produce an average of 1517gal @ 3.39% Protein.

- Capan 12 is one of a few British Friesian Bulls to be classified Excellent since 1982 in Ireland.
- The IHFA have awarded "Diamond Status" to Sneacta 32 -the 1st such to a Pure Friesian dam for being classified EX and producing over 3000 Kgs of Protein in her lifetime.

Dunum Image 51 VG87 IMG

British Friesian



HB No: IE 241024280424 100% British Friesian D.O.B. 12.12.2003

Pedigree

Sire: Grove Image
Dam: Dunum Arkadina 6 EX 90
MGS: Grove Breadwinner
MGD: Dunum Arkadina 4

ICBF Interbull Conversions 12/14			Milk Sub Index			PTA	Rel%
Index	Euro	Rel %	Milk kgs	Fat kgs	Prot kgs		
EBI	35	92	-404	-8	-11	-404	98
Milk	-42	98	0.17	0.17	0.07	-8	98
Fertility	86	84	0.07	0.07	4.80	-11	98
Calving	-8	96	-6.16	0.81		0.17	98
Beef	-11	98				0.07	98
Health	9	80				4.80	96
Maintenance	-2	94				-6.16	83
						0.81	85

UK British Friesian Production Proof 12/14

Milk kgs	Fat kgs	Prot kgs	Fat %	Prot %	Rel %	PLI E	Dtrs(UK)	Hds(UK)
-333	-1	-6.5	0.18	0.07	98	32	103	17

Irish Daughter Production

Parity	Milk (kg)	Fat (kg)	Protein (kg)	Fat (%)	Protein (%)
1	4743	195	164	4.11	3.46
2	5521	223	193q	4.04	3.50
3	5976	236	209	3.95	3.50
4	6206	246	217	3.96	3.50
5	6156	249	215	4.04	3.49

His dam Dunum Arkadina 6

Lact	305M	F%	P%	F+P	Days	Age
1	5454	4.81	3.49	454	305	2,2
2	6078	4.74	3.68	512	295	3,3
3	6205	4.94	3.64	532	297	4,3
4	7176	4.26	3.58	562	305	5,2
5	7062	4.45	3.69	575	305	6,1
6	6450	4.77	3.51	533	275	7,3
7	7338	4.48	3.49	584	305	8,2
8	7426	4.66	3.56	581	299	9,2
9	6616	4.19	3.65	519	305	10,2
10	Left open and flushed					
11	Finished midway in lactation					

- Longevity, power and production in-built in this Pedigree from the well known Dunum Limerick Herd of Martin Crowe.
- Look at his protein +0.07% +0.17% Fat.
- Excellent farmer satisfaction with milking daughters.
- Ideal bull to improve milk solids in your herd.
- Outstanding bull calves.
- 4th lactation daughters average 1386 gallons at 3.52% protein.

Verdi BS2020

Brown Swiss



Verdi dam

HB No: DE0946663620 DOB: 05.04.2012

Pedigree

Sire: Versace
Dam: Idro 9,655, 4.19, 3.61
MGS: Pronto
MGD: Irona

German Proofs Interbull 12/14 (ZUCHTWERTSCHATZUNG)

Milk kgs	+729		
Fat kgs	+37	Fat %	+0.09
Protein kgs	+37	Protein %	+0.14
Milk Index	131	Rel	64%
Total Merit Index	138	Rel	68%

Traits other than production (Zuchtwerte 12/14)

Linear description of progeny

		76	88	100	112	124
Frame Composite	99					
Rump Composite	88					
Feet & Legs Composite	108					
Udder Composite	102					
Final Score	107					

- Outcross pedigree for breeders.
- Very high milk and components.
- Top genomic sire for 2015.
- Excellent fitness traits.

Huger HGX

Brown Swiss

Hanni (Huger daughter)



HB No: DE0941915739 DOB: 08.01.2008

Pedigree

Sire: Husir
Dam: Loren – 9,898, 4.04, 3.74
MGS: Pronto
MGD: Lorena

German Proofs Interbull 12/14 (ZUCHTWERTSCHATZUNG)

Milk kgs	+300		
Fat kgs	+22	Fat %	+0.13
Protein kgs	+18	Protein %	+0.09
Milk Index	114	Rel	93%
Total Merit Index	120	Rel	88%

Traits other than production (Zuchtwerte 12/14)

Linear description of progeny

		76	88	100	112	124
Frame Composite	97					
Rump Composite	89					
Feet & Legs Composite	110					
Udder Composite	116					
Final Score	108					

- Top proven Brown Swiss bull for components and Type available.
- Excellent balance of fat and protein.
- Dam's production exceptional with high milk volume & protein/fat percentage.
- Excellent type bull.
- Milking speed and fertility excellent.
- Outcross pedigree so safe to use in Ireland.

Jukebox JBX

Brown Swiss



HB No: DE0944387691 DOB: 09.08.2010

Pedigree

Sire: Juhus
Dam: Kalina - 8,789, 4.01, 3.96
MGS: Player
MGD: Kimba - 9,531, 4.08, 3.98

German Proofs Interbull 12/13 (ZUCHTWERTSCHATZUNG)

Milk kgs	+349		
Fat kgs	+31	Fat %	+0.22
Protein kgs	+23	Protein %	+0.14
Milk Index	121	Rel	65%
Total Merit Index	126	Rel	70%

Traits other than production (Zuchtwerte 12/14)

Linear description of progeny

		76	88	100	112	124
Frame Composite	102					
Rump Composite	94					
Feet & Legs Composite	103					
Udder Composite	117					
Final Score	114					

- Outstanding son of the popular bull Juhus.
- Exceptional protein in cow family to a high of 3.98%.
- Phenomenal production with good longevity.
- Excellent linear.
- Not for use on heifers.
- Due to huge demand for Juhus semen which is no longer available, we are offering semen from the best Juhus son for sale in Ireland.

Juleng JGZ

Brown Swiss



Juleng daughter

HB No: DE0936791480 DOB: 07.08.2003

Pedigree

Sire: Jublend
Dam: Heriett 10,676, 4.99, 3.77
MGS: Playboy
MGD: Henriett

German Proofs Interbull 12/14 (ZUCHTWERTSCHATZUNG)

Milk kgs	+782		
Fat kgs	+27	Fat %	+0.07
Protein kgs	+26	Protein %	+0.03
Milk Index	118	Rel	83%
Total Merit Index	117	Rel	80%

Traits other than production (Zuchtwerte 12/14)

Linear description of progeny

		76	88	100	112	124
Frame Composite	119					
Rump Composite	128					
Feet & Legs Composite	93					
Udder Composite	106					
Final Score	117					

- Very high seller in Germany.
- Use to increase strength and frame.
- Excellent milking speed.
- High milk production bull +782kg.
- Suitable for heifer matings.
- Bull calves have excellent performance.

Patch PAZ

Montbeliarde

HB No: FR 6329259703 DOB: 24.08.1999

Pedigree

Sire: Gel (by Verglas)
Dam: Lavaste
MGS: Index
MGD: Aura

ICBF Interbull Conversions 12/14

Index	Euro	Rel %	Milk Sub Index	PTA	Rel%
EBI	50	69	Milk kg	28	87
Milk	7	87	Fat kg	0	87
Fertility	53	51	Prot kg	2	87
Calving	-14	74	Fat %	-0.02	87
Beef	10	84	Prot %	0.01	87
Health	3	57	Calv Diff %	4.20	76
Maintenance	-3	72	Calv Int (days)	-4.29	51
			Surv %	-0.04	51

Irish Daughter Production

Parity	Milk (kg)	Fat (kg)	Fat (%)	Protein (kg)	Protein (%)
1	5135	202	3.93	173	3.37
2	5721	215	3.76	194	3.39
3	6267	240	3.83	213	3.40
4	6424	250	3.89	221	3.44
5	7203	279	3.87	247	3.43

- Bought out of the outstanding herd of Daniel Remonay France, famous for his speciality cheese manufacture.
- Very good production from Patch daughters.
- Sire and dam have excellent indices.
- Daughters average 7203kgs of milk @ 3.43% protein as mature cows.

Pascal PSA

MRI

DOB: 28.11.1998

Pedigree

Sire: Parole / PAE
Dam: Katja 31
MGS: Ajax
MGD: Katja 3

ICBF Interbull Conversions 12/14

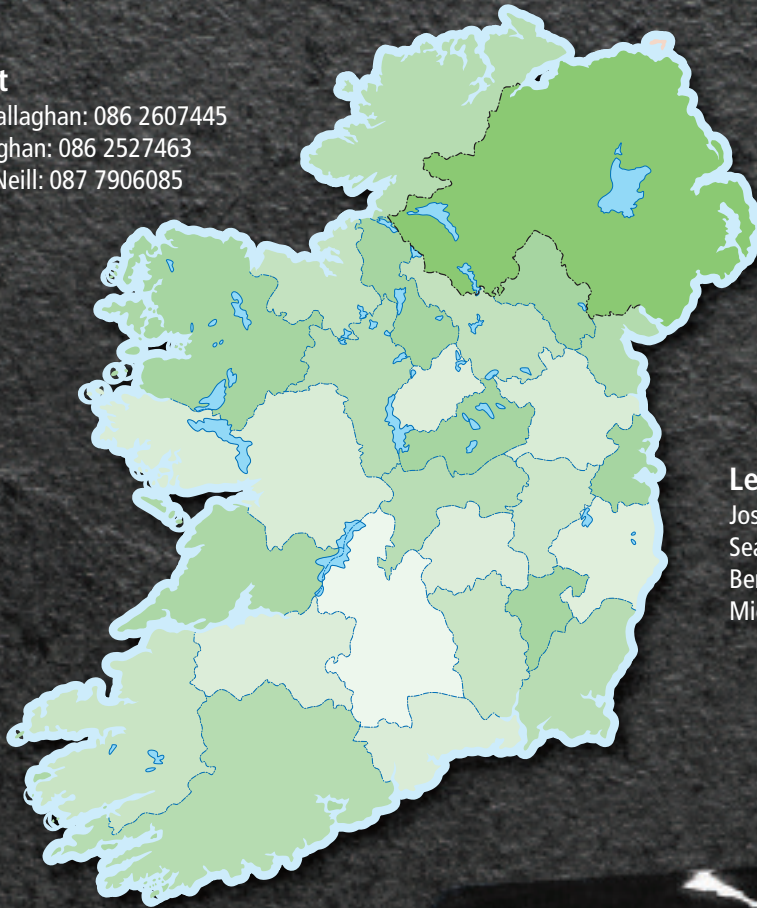
Index	Euro	Rel %	Milk Sub Index	PTA	Rel%
EBI	114	58	Milk kg	-145	76
Milk	22	76	Fat kg	-3	76
Fertility	81	56	Prot kg	2	76
Calving	23	44	Fat %	0.04	76
Beef	12	46	Prot %	0.13	76
Health	-8	63	Calv Diff %	3.26	60
Maintenance	-7	34	Calv Int (days)	-5.29	68
			Surv %	1.31	32

Irish Daughter Production

Parity	Milk (kg)	Fat (kg)	Fat (%)	Protein (kg)	Protein (%)
1	4945	187	3.78	177	3.58

Connacht

Joseph O'Callaghan: 086 2607445
Joe O'Callaghan: 086 2527463
Michael O'Neill: 087 7906085



Ulster

Crosskeys Genetics N. Ireland Agent
Stephen Barry: 079 44391254
Kathryn Marshall: 078 01363665
Barney Tighe: 087 7985194
Michael O'Neill: 087 7906085

Leinster

Joseph O'Callaghan: 086 2607445
Seamus Costigan: 086 2306828
Bernard Tighe: 087 7985194
Michael O'Neill: 087 7906085

Munster

Joseph O'Callaghan: 086 2607445
Joe O'Callaghan: 086 2527463
Pearse O'Sullivan: 087 7798728
Seamus Costigan: 086 2306828
Dermot McCarthy: 087 9638330
Michael O'Neill: 087 7906085



Bova
GeneticGiants

Ballyart, Brittas, Co.Limerick
Tel: Tel: +353 61 351233
Email: info@bova-ai.com
sales@geneticgiants.com
Web: www.bova-ai.com